

PROPOSED AGENDA FOR TOWN COUNCIL MEETING
October 15, 2007
7:00 p.m.

5:00 p.m. Tour of the Marriott Hotel and Conference Center construction site and tour of the Medici Restaurant

6:50 p.m. Regular Meeting Normal Local Liquor Commission

1. Call to Order

2. Roll Call

3. Pledge of Allegiance

4. OMNIBUS VOTE AGENDA

(All items under the Omnibus Vote Agenda are considered to be routine in nature and will be enacted by one motion. There will be no separate discussions of these items unless a Council Member so requests, in which event, the item will be removed from the Omnibus Vote Agenda and considered as the first item after approval of the Omnibus Vote Agenda.)

A. Approval of the Minutes of the Regular Meeting of October 1, 2007

B. Approval of Town of Normal Expenditures for Payment as of October 10, 2007

C. Motion to Accept the Water Treatment Plan Chemical Bids for November 2007 through October 2008 and to Authorize Staff to Negotiate an Extension of the Current Carbon Dioxide Contract

D. Motion to Waive the Formal Bid Process and Award a Contract Under the US Communities Purchasing Program to NuToys Leisure Products of LaGrange, Illinois for the Purchase of Modular Skate Park Equipment in the Amount of \$63,988

E. Motion to Initiate a Zoning Map Amendment (Near East Pine Street between the One Normal Plaza PUD and the Savannah Green PUD)

F. Motion to Authorize the Preparation of the 2007 Property Tax Levy Ordinance

G. Resolution Authorizing Execution of an Agreement with Ratio Architects of Champaign, Illinois for a City Hall Office Space Study and Approval of Required Budget Amendment

H. Resolution Authorizing the Execution of an Agreement with the Union Pacific Railroad to Relocate Existing Railroad Signal Equipment from Fell Avenue to Linden Street in Conjunction with the Hotel/Conference Center Parking Deck and the Multimodal Transportation Center Projects in an Amount Not to Exceed \$122,000

I. Resolution to Appropriate \$945,400.00 of Motor Fuel Tax Funds for the Construction of Ziebarth Road from Pipeline Road west to approximately 1600' west of Glendale Lane

- J. Resolution Conditionally and Partially Approving an Amended Final Development Plan for the Shoppes at College Hills Planned Unit Development (Red Lobster Restaurant)

5. ITEMS REMOVED FROM OMNIBUS VOTE AGENDA

GENERAL ORDERS

NEW BUSINESS

6. Motion to Adjourn to Executive Session

MAYOR'S MOMENT

CONCERNS

ADJOURNMENT

ADDENDUM

Town of Normal Planning Commission Minutes October 4, 2007

MINUTES OF THE REGULAR MEETING OF THE NORMAL TOWN COUNCIL HELD IN THE COUNCIL CHAMBERS, NORMAL CITY HALL, 100 EAST PHOENIX AVENUE, NORMAL, MCLEAN COUNTY, ILLINOIS – MONDAY, OCTOBER 1, 2007.

1. CALL TO ORDER:

Mayor Koos called the regular meeting of the Normal Town Council to order at 7:09 p.m., Monday, October 1, 2007.

2. ROLL CALL:

The Clerk called the roll with the following persons physically

PRESENT: Mayor Chris Koos and Councilmembers Sonja Reece, Adam Nielsen, Jeff Fritzen, Chuck Scott, and Jason Chambers. Also present were Assistant City Manager Pamela Reece, Corporation Counsel Steve Mahrt, and Town Clerk Wendy Briggs.

ABSENT: Councilmember Cheryl Gaines and City Manager Mark Peterson.

3. PLEDGE OF ALLEGIANCE:

Mayor Koos led the Pledge of Allegiance to the Flag.

4. OMNIBUS VOTE AGENDA:

Mayor Koos announced Item N had been removed from the Agenda.

Mayor Koos excused himself from voting on any bills he may have incurred while performing his Mayoral duties and from any bills submitted by Vitesse Cycle Shop. Councilmember Reece excused herself from voting on any bills submitted by BroMenn Healthcare and from any bills she may have incurred while performing her Council duties.

Councilmember Scott excused himself from voting on Item J.

Items E, F, G, and L were removed from the Omnibus Vote Agenda.

MOTION:

Councilmember Fritzen moved, seconded by Councilmember Nielsen, the Council Approve the Omnibus Vote Agenda.

AYES: Reece, Nielsen, Fritzen, Scott, Chambers, Koos.

NAYS: None.

ABSENT: Gaines.

Motion declared carried.

A. APPROVAL OF THE MINUTES OF THE REGULAR MEETING OF SEPTEMBER 17, 2007: Omnibus Vote.

B. APPROVAL OF TOWN OF NORMAL EXPENDITURES FOR PAYMENT AS OF SEPTEMBER 26, 2007: Omnibus Vote.

- C. MOTION TO APPROVE THE PURCHASE OF A TWELVE LEAD DEFIBRILLATOR FROM ZOLL MEDICAL CORPORATION IN THE AMOUNT OF \$16,539: Omnibus Vote.
- D. MOTION AUTHORIZING PAYMENT TO THE BANK OF ILLINOIS IN THE AMOUNT OF \$27,216 FOR WORK PERFORMED ADJACENT TO THE LIBRARY AND ECOLOGY ACTION CENTER AND APPROVAL OF AN ASSOCIATED BUDGET ADJUSTMENT: Omnibus Vote.
- H. RESOLUTION AUTHORIZING AN EXTENSION AND RATE ADJUSTMENT TO A CONTRACT WITH LAESCH ELECTRIC, INC., FOR TRAFFIC CONTROL EQUIPMENT AND HIGHWAY LIGHTING MAINTENANCE: Resolution No. 4099: Omnibus Vote.
- I. RESOLUTION ACCEPTING THE PUBLIC IMPROVEMENTS IN THE VETERANS BUSINESS PARK SUBDIVISION UNIT 1 FOR MAINTENANCE: Resolution No. 4100: Omnibus Vote.
- J. RESOLUTION CONDITIONALLY APPROVING THE FINAL PLAT OF THE RE-SUBDIVISION OF LOT 2 IN UNIVERSITY CENTER PLANNED UNIT DEVELOPMENT BY EXPEDITED PROCESS (ISU FOUNDATION): Resolution No. 4101: Omnibus Vote.
- K. RESOLUTION CONDITIONALLY AND PARTIALLY APPROVING THE FINAL PLAT OF THE TENTH ADDITION TO THE PHEASANT RIDGE SUBDIVISION: Resolution No. 4102: Omnibus Vote.
- M. ORDINANCE AMENDING SECTION 4.2 OF THE MUNICIPAL CODE OF THE TOWN OF NORMAL WITH REGARD TO ELEVATOR INSPECTIONS: Ordinance No. 5154: Omnibus Vote.
- O. ORDINANCE ANNEXING PROPERTY INTO THE TOWN OF NORMAL (TRAILS ON SUNSET LAKE): Ordinance No. 5155: Omnibus Vote.
5. ITEMS REMOVED FROM OMNIBUS VOTE AGENDA:
- E. MOTION TO WAIVE THE FORMAL BIDDING PROCESS AND ACCEPT A QUOTE FROM STARK EXCAVATING TO REPLACE A SANITARY SEWER IN THE ALLEY BEHIND THE PROPERTIES LOCATED ON THE NORTH SIDE OF NORTH STREET FROM BROADWAY AVENUE TO THE CONSTITUTION TRAIL AND APPROVAL OF AN ASSOCIATED BUDGET ADJUSTMENT:
- MOTION:
- Councilmember Reece moved, seconded by Councilmember Scott, the Council Waive the Formal Bidding Process and Accept a Quote from Stark Excavating to Replace a Sanitary Sewer in the Alley Behind the Properties Located on the North Side of North Street from Broadway Avenue to the Constitution Trail and Approval of an Associated Budget Adjustment.

Assistant City Manager Pamela Reece reported an Amended Council Report was before the Council, indicating the quote from Stark Excavating came in at \$199,395, which was fifty-three percent over the Engineer's estimate. Ms. Reece further reported that staff would ask the Council to authorize an expense not to exceed the \$199,395 and to further authorize staff to explore alternative solutions to this situation.

ALTERNATIVE MOTION:

Councilmember Nielsen moved, seconded by Councilmember Fritzen, Council Authorize an Expenditure Not to Exceed the Amount of \$199,395 and Further Authorize Staff to Explore Alternative Solutions to the Replacement of a Sanitary Sewer in the Alley Behind the Properties Located on the North Side of North Street from Broadway Avenue to Constitution Trail and Approval of an Associated Budget Adjustment.

Town Engineer Gene Brown responded to questions from Council concerning this project. Council clarified staff is authorized to explore alternatives and is not tied to Stark Excavating.

AYES: Reece, Nielsen, Fritzen, Scott, Chambers, Koos.

NAYS: None.

ABSENT: Gaines.

Alternative motion declared carried.

F. MOTION AUTHORIZING PAYMENT FOR EXTRA WORK RELATED TO SITE PREPARATION ON THE MARRIOTT HOTEL AND CONFERENCE CENTER PROJECT TO JQH-NORMAL DEVELOPMENT, LLC, IN THE AMOUNT OF \$94,972:

MOTION:

Councilmember Fritzen moved, seconded by Councilmember Nielsen, the Council Authorize Payment for Extra Work Related to Site Preparation on the Marriott Hotel and Conference Center Project to JQH-Normal Development, LLC, in the Amount of \$94,972.

Councilmember Fritzen expressed concern with the additional payment for the extra site preparation work, which concerns were responded to by Uptown Director Wayne Aldrich.

AYES: Reece, Nielsen, Scott, Chambers, Koos.

NAYS: Fritzen.

ABSENT: Gaines.

Motion declared carried.

G. RESOLUTION ADOPTING HONORARY STREET DESIGNATION POLICIES AND PROCEDURES: Resolution No. 4103:

MOTION:

Councilmember Reece moved, seconded by Councilmember Scott, the Council Adopt a Resolution Adopting Honorary Street Designation Policies and Procedures.

Councilmember Reece offered comments and expressed concern with the program, indicating the need to proceed cautiously with the program. Assistant to the City Manager Geoff Fruin responded to questions concerning the policies and procedures.

AYES: Reece, Nielsen, Fritzen, Scott, Chambers, Koos.

NAYS: None.

ABSENT: Gaines.

Motion declared carried.

- L. RESOLUTION CONDITIONALLY AND PARTIALLY APPROVING THE FINAL PLAT OF THE STONEGATE SUBDIVISION (VINEYARDS):
Resolution No. 4104:

MOTION:

Councilmember Fritzen moved, seconded by Councilmember Scott, the Council Adopt the Resolution Conditionally and Partially Approving the Final Plat of the Stonegate Subdivision (Vineyards).

Assistant City Manager Pamela Reece explained a revised Resolution was before the Council, as this revised Resolution includes easement language as part of the approving conditions.

AYES: Reece, Nielsen, Fritzen, Scott, Chambers, Koos.

NAYS: None.

ABSENT: Gaines.

Motion declared carried.

- N. ORDINANCE RESCINDING ORDINANCE NO. 5122 (DISCONNECTION OF LAND FROM THE TOWN OF NORMAL):

Mayor Koos announced this Item had been withdrawn from the Agenda.

GENERAL ORDERS

6. MOTION TO ACCEPT THE GREEN TEAM STATUS REPORT AND RECOMMENDATIONS – 2007:

MOTION:

Councilmember Scott moved, seconded by Councilmember Chambers, the Council Accept the Green Team Status Report and Recommendations – 2007.

Town Planner Mercy Davison responded to questions from Council concerning the proposed report. Council complimented staff for the report and recommendations.

AYES: Reece, Nielsen, Fritzen, Scott, Chambers, Koos.

NAYS: None.

ABSENT: Gaines.

Motion declared carried.

NEW BUSINESS

7. MOTION TO APPROVE AN APPOINTMENT TO THE BLOOMINGTON-NORMAL SISTER CITIES COMMITTEE:

MOTION:

Councilmember Nielsen moved, seconded by Councilmember Chambers, the Council Approve the Recommended Appointment to the Bloomington-Normal Sister Cities Committee.

AYES: Reece, Nielsen, Fritzen, Scott, Chambers, Koos.

NAYS: None.

ABSENT: Gaines.

Motion declared carried.

President pro tem Reece announced Ms. Mary Anne Schierman, 1405 Bird Court, Normal, Illinois, had been appointed to the Sister Cities Committee.

8. MAYOR'S MOMENT:

Mayor Koos encouraged residents of the Town to participate in Illinois State University's "Spread the Red" activities associated with the upcoming Homecoming and their 150th Anniversary Celebration.

9. CONCERNS:

1. COMPUTER LIST SERVE:

Councilmember Nielsen discussed recent rumors associated with a red truck and possible child abduction attempts and indicated the computer list serve will be available on October 15 which will allow the Town and the Police Department to communicate directly with residents to reduce similar rumors.

2. OLD CELL PHONES:

Councilmember Reece reminded residents that old cell phones can be donated to the Police Department to be reprogrammed and used for domestic violence victims.

3. PANTAGRAPH “20 UNDER 40”:

Councilmember Reece congratulated Geoff Fruin for being recognized by The Pantagraph as one of the “20 Under 40.”

4. AERIAL PHOTO:

Councilmember Fritzen shared an old aerial photo of the Uptown area and indicated his mother had been able to track down historical information on many of the buildings contained in the photograph.

10. ADJOURNMENT:

There being no further business to come before the Council, Mayor Koos called for a Motion to Adjourn.

MOTION:

Councilmember Scott moved, seconded by Councilmember Reece, the Regular Meeting of the Normal Town Council be Adjourned.

AYES: Reece, Nielsen, Fritzen, Scott, Chambers, Koos.

NAYS: None.

ABSENT: Gaines.

Motion declared carried.

Mayor Koos adjourned the regular meeting of the Normal Town Council at 7:49 p.m., Monday, October 1, 2007.

| <u>Vendor Name</u> | <u>Description</u> | <u>Transaction Amount</u> |
|---|----------------------------|---------------------------|
| <u>General Fund Mayor & Council Administration</u> | | |
| CARDMEMBER SERVICE | HARPER OIL/MAGGIE MILEYS | \$74.52 |
| CARDMEMBER SERVICE | MAYOR SEATTLE REGISTRATION | \$125.00 |
| CARDMEMBER SERVICE | COUNCIL RETREAT | \$162.05 |
| COSI | CATERING- C/RETREAT,UNIVR | \$157.98 |
| COSI | CATERING: 9/11, 9/17 | \$113.30 |
| JIM ARMSTRONG | FELL MONUMENT PLAQUE | \$25.00 |
| General Fund Mayor & Council Administration Total | | \$657.85 |
| <u>General Fund Administration - City Mgr Boards & Commissions</u> | | |
| NAACP | NAACP 07 STATE CONFERENCE | \$75.00 |
| ROHAN-STRACK ENTERPRISES | BOX LUNCHES - NAN MTG | \$50.40 |
| APA ISS | APA REGISTRATION FOR COMM | \$125.00 |
| CARDMEMBER SERVICE | DOC COVERS | \$27.98 |
| General Fund Administration - City Mgr Boards & Commissions Total | | \$278.38 |
| <u>General Fund Administration - City Mgr City Manager</u> | | |
| ISSCS HPS | A PLACE WE CALLED HOME | \$200.00 |
| GLT 89FM RADIO | NOV 09 - EVENT SPONSER | \$1,000.00 |
| ROHAN-STRACK ENTERPRISES | SANDWICHES - CONF RM C | \$60.24 |
| ROHAN-STRACK ENTERPRISES | BOX LUNCHES - 9/11 | \$50.40 |
| ROHAN-STRACK ENTERPRISES | BARGAINING MEETING | \$52.69 |
| CARDMEMBER SERVICE | VARIOUS MEALS | \$234.46 |
| CARDMEMBER SERVICE | DAVISON SEATTLE REGISTRATI | \$125.00 |
| CARDMEMBER SERVICE | SEASIDE CREDIT | (\$75.00) |
| CARDMEMBER SERVICE | COSI/NV ULTRA/AMOCO/SWING | \$357.58 |
| COSI | CATERING: 9/11, 9/17 | \$360.33 |
| PARKWAY AUTO LAUNDRY | M-1 WASH | \$7.00 |
| SECRETARY OF STATE | STICKER RENEWAL | \$78.00 |
| GOVCONNECTION INC | DIGITAL VOICE RECORDER | \$340.07 |
| GOVCONNECTION INC | DIGITAL VOICE RECORDERS | \$233.40 |
| General Fund Administration - City Mgr City Manager Total | | \$3,024.17 |
| <u>General Fund Administration - City Mgr Uptown Project</u> | | |
| JIM ULAVEGE SIGNS | MULBERRY ACCESS (CHNG) | \$50.00 |
| SAJOVEC HOME IMPROVEMENT | MATERIAL,PERMIT-UPTWN OFC | \$939.20 |
| SAJOVEC HOME IMPROVEMENT | LABOR FOR RENOVATIONS | \$3,920.00 |
| B/N CONVENTION & VISITORS BU | 2008 VISITOR GUIDE AD | \$3,150.00 |
| HARLAN VANCE COMPANY | MEN'S POLO (UPTWN) | \$19.98 |
| CARDMEMBER SERVICE | ROCKFORD CONFERENCE | \$193.40 |
| General Fund Administration - City Mgr Uptown Project Total | | \$8,272.58 |
| <u>General Fund Administration - City Mgr General Expense Dept.</u> | | |
| U S MECHANICAL SERVICES | A/C SERVICE - UPTWN | \$165.00 |
| WALMART COMMUNITY BRC | UW BBQ BUNS | \$59.89 |
| WASHBURN FLOWERS | FUNERAL FLOWERS | \$45.00 |
| ROHAN-STRACK ENTERPRISES | PARTY PLATTER | \$143.70 |
| ROHAN-STRACK ENTERPRISES | BOX LUNCHES - 9/11 | \$126.00 |
| CONTEMPORARY BUSINESS FORI | T/N PINS, UPTWN PINS | \$1,015.00 |
| COSI | CATERING- C/RETREAT,UNIVR | \$50.25 |
| BOUND TREE MEDICAL LLC | DEFIB PADS (109878) | \$213.87 |
| B/N CONVENTION & VISITORS BU | HOTEL/MOTEL TAX | \$21,512.35 |
| UFTRING | M HELTON REPAIRS | \$875.04 |
| AARON REESE | PROGRAM CANCELLATION REFU | \$25.00 |
| BRADY LUMBER & CONSTRUCTIC | GL# 221 PROJECT COMPLETE | \$9,753.00 |
| General Fund Administration - City Mgr General Expense Dept. Total | | \$33,984.10 |
| <u>General Fund Town Clerk Administration</u> | | |
| NORMALITE | PUBLICATION COSTS | \$5,885.00 |
| General Fund Town Clerk Administration Total | | \$5,885.00 |
| <u>General Fund Corporation Counsel Administration</u> | | |
| MAHRT, STEVEN | REIMBURSEMENT | \$65.73 |
| ILGL | WK REGISTRATION | \$85.00 |
| General Fund Corporation Counsel Administration Total | | \$150.73 |

| <u>Vendor Name</u> | <u>Description</u> | <u>Transaction Amount</u> |
|---|---------------------------|---------------------------|
| <u>General Fund Facility Management Administration</u> | | |
| RANDY KOCH | KOCH-07 CLOTHING | \$56.95 |
| LINDEN CONDO ASSOCIATION | MONTHLY ASSOCIATION DUES | \$3,000.00 |
| NICOR GAS | ACCT 49-14-49-1000 4 | \$28.74 |
| ACE HARDWARE | SUPPLIES - FAC MGMT | \$30.48 |
| ACE HARDWARE | SUPPLIES - FAC MGMT | \$17.35 |
| ACE HARDWARE | SUPPLIES - FAC MGMT | \$158.97 |
| ACE HARDWARE | SUPPLIES - FAC MGMT | \$5.18 |
| ACE HARDWARE | SUPPLIES - FAC MGMT | \$106.50 |
| HOLSTEINS CLEARVIEW WINDOW | PW WINDOW WASHING SEPT07 | \$180.00 |
| M A B PAINT STORE #803 | PAINT SUPPLIES - FACMGMT | \$139.06 |
| M A B PAINT STORE #803 | PRIME FAST (FACMGMT) | \$35.80 |
| M A B PAINT STORE #803 | PAINT AND SUPPLIES | \$127.54 |
| MENARDS | DRYWALL, GYPSUM | \$41.84 |
| MENARDS | CORNER ROLLER, SPRAY | \$407.27 |
| MENARDS | MAHOGANY DOOR,KNOB,HINGE | \$43.87 |
| MENARDS | CRYSTAL WHITE 7 | \$77.44 |
| MENARDS | DRYWALL MUD, PAUL, TAPE | \$18.91 |
| MENARDS | INT DOORS, MC CABLE, | \$212.47 |
| SPRINGFIELD ELECTRIC CO | LITH KBD832TRTLV LIGHTING | \$4,120.11 |
| CARDMEMBER SERVICE | TOYSRUS - KID ALERT'S | \$74.97 |
| SHERWIN-WILLIAMS CO | PAINT SUPPLIES | \$61.03 |
| ILLINOIS PRAIRIE ELECTRIC INC | OUTLETS,SWITCHES-LINDN ST | \$2,580.00 |
| MILLER JANITOR SUPPLY | SCRUBBER,SRV - CDM/33NCH | \$347.05 |
| THYSSENKRUPP ELEVATOR COR | QTRLY MAINT:OCT-DEC31/07 | \$119.05 |
| U S MECHANICAL SERVICES | PRESSURE WASH CONDENSER | \$320.00 |
| U S MECHANICAL SERVICES | CONDENSER PARTS- C HALL | \$970.00 |
| U S MECHANICAL SERVICES | CONDENSER PARTS (NPD) | \$1,075.00 |
| U S MECHANICAL SERVICES | ROOFTOP UNIT REPAIRED | \$274.09 |
| INTERSTATE ALL BATTERY CENT | BATTERY (TH) | \$60.95 |
| ACE HARDWARE | SUPPLIES - FAC MGMT | \$9.27 |
| ACE HARDWARE | SUPPLIES - FAC MGMT | \$57.55 |
| DRUMMOND AMERICAN CORP | DEODORIZER | \$166.05 |
| MENARDS | 50W BULBS,WASTEBASKETS, | \$23.94 |
| MENARDS | 50W BULBS,WASTEBASKETS, | \$11.46 |
| MENARDS | 50W BULBS,WASTEBASKETS, | \$11.60 |
| MILLER JANITOR SUPPLY | GARBAGE LINER, CLNR-33NCH | \$175.85 |
| MILLER JANITOR SUPPLY | TP - 33 NCH00 | \$44.88 |
| MILLER JANITOR SUPPLY | TP, CLEANER - C HALL | \$70.58 |
| MILLER JANITOR SUPPLY | SUPPLIES - CAC / 33NCH | \$220.53 |
| MILLER JANITOR SUPPLY | BLK GARBAGE LINER-33NCH00 | \$30.03 |
| MILLER JANITOR SUPPLY | SUPPLIES - CDM /33NCH00 | \$452.07 |
| MILLER JANITOR SUPPLY | MOP,AIR FRESHNER-WTR ADMN | \$50.37 |
| MILLER JANITOR SUPPLY | MOP HNDL,MOP- NFD/33NCH | \$51.40 |
| CINTAS CORPORATION #396 | MUSEUM | \$36.00 |
| CINTAS CORPORATION #396 | CARPET RUNNER - CDM | \$36.00 |
| CARDMEMBER SERVICE | MAGGIE MILEY'S -MENTOR LU | \$32.95 |
| C&H DISTRIBUTORS LLC | PANEL/SHEET RUCK,UPRIGHTS | \$858.94 |
| XCELL MECHANICAL SYSTEMS | INSTALL CNTRLS- CDM | \$1,716.31 |
| General Fund Facility Management Administration Total | | \$18,746.40 |
| <u>General Fund Finance Administration</u> | | |
| JPMORGAN COMPENSATION ANI | GASB 45 VALUATION | \$3,000.00 |
| CARDMEMBER SERVICE | IGFOA ANNUAL CONF.ROOM EX | \$195.80 |
| CARDMEMBER SERVICE | IGFOA ANNUAL CONF-ROOM EX | \$306.45 |
| CARDMEMBER SERVICE | IGFOA ANNUAL CONF-ROOM EX | \$195.80 |
| General Fund Finance Administration Total | | \$3,698.05 |
| <u>General Fund Purchasing Office Supply</u> | | |
| W M PUTNAM COMPANY | 5X19 SCRAP BOOKS | \$139.36 |
| W M PUTNAM COMPANY | ANNEX I - OFFICE SUPPLIES | \$72.02 |

| <u>Vendor Name</u> | <u>Description</u> | <u>Transaction Amount</u> |
|---------------------------|---------------------------|---------------------------|
| W M PUTNAM COMPANY | ANNEX II-OFFICE SUPPLIES | \$49.09 |
| W M PUTNAM COMPANY | CITY HALL-OFFICE SUPPLIES | \$286.05 |
| W M PUTNAM COMPANY | CDM - OFFICE SUPPLIES | \$40.96 |
| BLOOMINGTON OFFSET PROCES | PRINT RETURN ADDRESS | \$596.00 |
| QUILL CORPORATION | UNIV LABELS, POST CARDS | \$55.97 |
| QUILL CORPORATION | PENS, PENCILS, POST IT'S | \$83.92 |
| CARDMEMBER SERVICE | PAPER FOR PR PROGRAMS | \$14.99 |
| MIDLAND PAPER | BOND ENVELOPES | \$569.48 |

General Fund Purchasing Office Supply Total \$1,907.84

General Fund Purchasing Administration

| | | |
|--------------------------|-------------------|------------|
| US POSTAL SERVICE/HASLER | REPLENISH POSTAGE | \$5,000.00 |
|--------------------------|-------------------|------------|

General Fund Purchasing Administration Total \$5,000.00

General Fund Information Technology Administration

| | | |
|-----------------------------|----------------------------|-------------|
| CARDMEMBER SERVICE | THAWTE - DOMAIN VPN.NORMA | \$149.00 |
| CDW GOVERNMENT INC | CREDIT - MS SLD VSTUDIO | (\$291.03) |
| CDW GOVERNMENT INC | CREDIT - CISCO AIRONET | (\$181.55) |
| GOVCONNECTION INC | PRINTER, MAINT KIT, TONER | \$212.50 |
| GOVCONNECTION INC | HP TONERS, PRINT CART | \$372.20 |
| VERIZON NORTH | ACCT 12 9000 2760082679 0 | \$7,193.54 |
| MCLEOD/USA | ACCT 3317764 | \$285.32 |
| VERIZON SELECT SERVICES INC | 3 EXTENSIONS MOVED | \$40.00 |
| NEXTEL COMMUNICATIONS | ACCT 183003087 AUG21-SEP2 | \$10,615.74 |
| A5.COM LLC | ACCT 9354 SEPT07 | \$471.00 |
| CARDMEMBER SERVICE | CHERRY-MWHUG HILTON | \$498.46 |
| ERIK DECKER | DECKER-INFRAGARD SPRINGFI | \$75.18 |
| CARDMEMBER SERVICE | OFFICE DEPOT -PHONE CORDS | \$47.94 |
| CARDMEMBER SERVICE | BEST BUY - ERGO KEYBOARD | \$62.99 |
| CARDMEMBER SERVICE | STAMP CONNECTION - SCANNER | \$10.95 |
| GOVCONNECTION INC | HP BLK INK CART | \$62.42 |
| GOVCONNECTION INC | USB TO PS2 CONVERTER | \$32.68 |
| GOVCONNECTION INC | CANON COLOR DUPLEX | \$680.43 |
| GOVCONNECTION INC | EPSON RIBBONS | \$9.02 |
| GOVCONNECTION INC | DESKJET 2000 DBL CAPACITY | \$26.37 |
| GOVCONNECTION INC | PRINTER, MAINT KIT, TONER | \$216.22 |
| GOVCONNECTION INC | TUNGSTEN E2 PDA, FRGHT | \$0.06 |
| GOVCONNECTION INC | HP TONERS, PRINT CART | \$618.97 |
| GOVCONNECTION INC | CD SCRATCH REMOVER KIT | \$9.81 |
| GOVCONNECTION INC | PRINTER, MAINT KIT, TONER | \$1,052.21 |
| GOVCONNECTION INC | TUNGSTEN E2 PDA, FRGHT | \$181.05 |
| GOVCONNECTION INC | NUVI 200 GPS N AMERICA | \$290.77 |

General Fund Information Technology Administration Total \$22,742.25

General Fund Human Resources Administration

| | | |
|------------------------------|---------------------------|-------------|
| CHESTNUT GLOBAL PARTNERS I | EAP SERVICE: 9/07-8/31/08 | \$11,625.00 |
| BROMENN MEDICAL GROUP | BAT | \$25.00 |
| BROMENN MEDICAL GROUP | DRUG TESTS | \$160.00 |
| BROMENN MEDICAL GROUP | EMPLOYEE PHYSICALS (2) | \$1,884.00 |
| AMERICAN ADMINISTRATIVE GR | FLEX SPENDING ADMIN-SEP | \$418.50 |
| IL ST POLICE BUREAU OF IDENT | HR/ACCNT- BACKGRND CHECKS | \$5,000.00 |
| CAMPION,BARROW & ASSOCIATE | PSYC TEST | \$395.00 |
| CARDMEMBER SERVICE | HTE TRAINING - HANNA | \$186.53 |
| CARDMEMBER SERVICE | IPMA-GIC MEETING - HANNA | \$70.66 |
| CARDMEMBER SERVICE | IPERA CONFERENCE - GARIBA | \$165.40 |

General Fund Human Resources Administration Total \$19,930.09

General Fund Inspections Administration

| | | |
|------------------------------|---------------------------|------------|
| RED WING SHOE STORE | BOOTS-TROY SONDGEROTH | \$116.45 |
| AVANTI'S ITALIAN RESTAURANT | G. TROEMEL-MEETING | \$102.30 |
| IL PROTECTIVE OFFICIALS CONF | IPOC MEETING-OCTOBER 07 | \$120.00 |
| CARDMEMBER SERVICE | CREDIT FOR ICC REGIS.T-SO | (\$390.00) |
| CARDMEMBER SERVICE | MEETING-REFRESHMENTS | \$32.67 |

| <u>Vendor Name</u> | <u>Description</u> | <u>Transaction Amount</u> |
|--|---------------------------|---------------------------|
| CARDMEMBER SERVICE | L.KERESTES-APA MEETING | \$110.00 |
| CARDMEMBER SERVICE | FUEL-R. VEERMAN | \$34.09 |
| CARDMEMBER SERVICE | LODGEING-R. VEERMAN | \$377.28 |
| RAND VEERMAN | REIMB. FOR FOOD RAND VEER | \$36.32 |
| APA ISS | MERCY DAVISON, LAUREN KER | \$50.00 |
| SIUE | SCHOOLCRAFT-IBPS REG | \$95.00 |
| A.R.D.C. | REGISTRATION-ARDC MERCY D | \$105.00 |
| General Fund Inspections Administration Total | | \$789.11 |
| General Fund Police Narcotics Enforcement | | |
| WALMART COMMUNITY BRC | VICE SUPPLIES | \$35.01 |
| General Fund Police Narcotics Enforcement Total | | \$35.01 |
| General Fund Police Administration | | |
| RAY O'HERRON CO INC | AIRFORCE CAP | \$49.95 |
| RAY O'HERRON CO INC | SHIRT,RIOT HELMET,WHSTLCH | \$126.90 |
| RAY O'HERRON CO INC | LS SHIRTS,W/ZIPPER | \$90.16 |
| RAY O'HERRON CO INC | PANTS, SHIRT W/ZIPPER | \$94.40 |
| RAY O'HERRON CO INC | S/S SHIRT, W/ZIPPER | \$36.45 |
| RAY O'HERRON CO INC | EXTERNAL ASSUALT SHELL-BL | \$223.19 |
| RAY O'HERRON CO INC | ASSULT VEST | \$219.00 |
| RAY O'HERRON CO INC | GAS MASK | \$259.38 |
| T/N PETTY CASH-POLICE DEPT | ALTERATIONS TO CLOTHING | \$32.00 |
| PURITAN SPRINGS WATER | SERVICE 9/21-10/18 | \$64.00 |
| STERICYCLE INC | MONTHLY FEE, PREV BAL | \$325.87 |
| AUTO GLASS CENTER | TINT L/REAR-06 CRWNVIC | \$787.36 |
| RAY O'HERRON CO INC | M.C.O.T NARROW TOOL | \$197.17 |
| MUNICIPAL ELECTRONICS INC | RADAR CERTIFICATIONS | \$1,178.00 |
| WHERRY MACHINE & WELDING I | MIRROR NUT (NPD CAR) | \$90.90 |
| SUPREME RADIO COMMUNICATI | RADIO REPAIR/LABOR | \$275.00 |
| JOURNAL STAR | CRIMINAL INTELLIGENCE AD | \$349.00 |
| STATE JOURNAL REGISTER | CRIMINAL INTELLIGENCE AD | \$259.18 |
| T/N PETTY CASH-POLICE DEPT | POSTAGE FOR CID RETURN LE | \$0.41 |
| P F PETTIBONE & COMPANY | CITATION TICKETS | \$1,999.50 |
| Central IL Newspaper Group | CRIME ANALYST AD | \$524.50 |
| T/N PETTY CASH-POLICE DEPT | MEALS/PARKING DURING TRAI | \$58.59 |
| UNIVERSITY OF ILLINOIS | TUITION FOR TRNG-DROUGHT/ | \$1,020.00 |
| Officer Todd Drought | MEALS DURING TRAINING | \$69.66 |
| East Central IL Police Trng | STREET SURVIVAL SEMINAR (| \$1,592.00 |
| Van Meter & Associates | QUOTA-FREE POLICE PRODUCT | \$145.00 |
| City of Bloomington | BIAS,BIGOTRY,HAT & TERROR | \$390.00 |
| IAFCI-ILLINOIS CHAPTER | REG/MEALS FOR CLASS (2 OF | \$60.00 |
| UNCLE BILL'S SELF STORAGE LL | M39M46 - STORAGE | \$409.03 |
| MICHELEOS PIZZA | CID - PIZZA | \$26.50 |
| OFFICE DEPOT CREDIT PLAN | CID/VICE SUPPLIES | \$69.26 |
| T/N PETTY CASH-POLICE DEPT | SHIPPING BOX FOR BROKEN B | \$7.51 |
| WALMART COMMUNITY BRC | CPA/CID SUPPLIES | \$154.56 |
| MAS MODERN MARKETING | LOLLIPOPS "JUST SAY NO" | \$153.24 |
| PETCO ANIMAL SUPPLIES INC | K-9 FOOD | \$106.97 |
| OTTO ENGINEERING | EARPHONES W/TUBE, ADAPTER | \$331.20 |
| General Fund Police Administration Total | | \$11,775.84 |
| General Fund Fire Foreign Fire Tax | | |
| SUPREME RADIO COMMUNICATI | INSTALL PRGRM STAR-COM | \$397.50 |
| General Fund Fire Foreign Fire Tax Total | | \$397.50 |
| General Fund Fire Prevention | | |
| DARNALL PRINTING | BUS CARDS- HUMER, FATA | \$61.75 |
| NATIONAL FIRE PROTECTION AS | FPW BANNER,POSTER,STICKER | \$196.95 |
| GLENN ROSECRANS | FIRE CODE BOOKS | \$574.06 |
| CARDMEMBER SERVICE | HOTEL ACCOMMODATIONS | \$372.96 |
| RYAN WILD | FUEL REIMB | \$10.41 |
| General Fund Fire Prevention Total | | \$1,216.13 |

| <u>Vendor Name</u> | <u>Description</u> | <u>Transaction Amount</u> |
|---|---------------------------|---------------------------|
| <u>General Fund Fire Administration</u> | | |
| WEST SIDE CLOTHING | CLOTHING - NFD / SEPT | \$1,168.00 |
| SCHULTZ, DONALD L | ARBITRATION | \$2,653.43 |
| BOUND TREE MEDICAL LLC | PROSPLINTS | \$102.41 |
| BOUND TREE MEDICAL LLC | ELECTRODES MUL/FUNCT PEDI | \$104.66 |
| BOUND TREE MEDICAL LLC | MEDICAL SUPPLIES (109878) | \$391.83 |
| BOUND TREE MEDICAL LLC | MEDICAL SUPPLIES | \$2,340.77 |
| TRI-ANIM HEALTH SERVICES INC | IV SET 10DRP/60DRP (4@) | \$1,017.64 |
| MISC FIRE DEPT | ALS INTERCEPT BFD | \$243.75 |
| MISC FIRE DEPT | ALS INTERCEPT BFD | \$203.50 |
| AMERENIP | MAINT FEE PINE | \$11.39 |
| U S MECHANICAL SERVICES | COMPLETE REPAIRS - STA#3 | \$240.50 |
| U S MECHANICAL SERVICES | A/C SRV - NFD STA#2 | \$125.00 |
| BRADFORD SUPPLY CO | GASKET FLANGES | \$18.39 |
| BRADFORD SUPPLY CO | BUTTERFLY VALVE | \$141.43 |
| MUNICIPAL EMERGENCY SERVIC | HANDLE BODY, KNOB | \$33.15 |
| MUNICIPAL EMERGENCY SERVIC | ADAPTER | \$276.78 |
| MUNICIPAL EMERGENCY SERVIC | MOTOROLA HNDHLD INTERFACE | \$1,000.00 |
| MUNICIPAL EMERGENCY SERVIC | MOTOROLA HNDHLD INTERFACE | \$13.75 |
| SCBAS INC | VALVE KIT, FREIGHT | \$145.98 |
| SCBAS INC | HYDROSTATIC RETEST,PARTS | \$262.98 |
| SUPREME RADIO COMMUNICATI | SERVICED CHARGER | \$61.25 |
| SUPREME RADIO COMMUNICATI | SERVICE VECH 3N21 | \$90.00 |
| PIERCY AUTO BODY INC | SERVICE- SNORKEL #10 | \$1,428.00 |
| MIKES LIGHTS & SUPPLIES | 48" LED LIGHTBARS | \$2,884.00 |
| DARNALL PRINTING | BUS CARDS- HUMER, FATA | \$61.75 |
| FASTSIGNS | ENGRAVING ROWMARK (NFD) | \$16.50 |
| HAWTHORN SUITES | HOTEL ACCOMMODATIONS | \$301.88 |
| HAWTHORN SUITES | HOTEL ACCOMMODATIONS | \$301.88 |
| DAVID HOLMES | ADVANCE MEALS | \$115.00 |
| CHAD STENGEL | ADVANCE MEALS | \$300.00 |
| TWIN CITY AWARDS | RETIREMENT PLAQUES (2) | \$156.00 |
| PRAXAIR DISTRIBUTION INC | OXYGEN - HDQ | \$480.17 |
| MERLE PHARMACY INC | MEDICAL SUPPLIES (NFD) | \$168.00 |
| DRUMMOND AMERICAN CORP | KA-POW CLEANER (NFD) | \$256.54 |
| MENARDS | SUPPLIES - FIRE | \$21.96 |
| MILLER JANITOR SUPPLY | SUPPLIES - 33NFD30 | \$129.63 |
| MILLER JANITOR SUPPLY | SUPPLIES - 33NFD30 | \$289.36 |
| MILLER JANITOR SUPPLY | BOWL CLNR,LINERS - 33NFD3 | \$55.32 |
| MENARDS | LP TANK EXCHANGE | \$14.24 |
| General Fund Fire Administration Total | | \$17,626.82 |
| <u>General Fund Public Works Public Benefit</u> | | |
| F&W LAWN CARE & LANDSCAPIN | MOW / TRIM- 1006 SHERIDAN | \$65.00 |
| General Fund Public Works Public Benefit Total | | \$65.00 |
| <u>General Fund Public Works Engineering</u> | | |
| RED WING SHOE STORE | BOOTS - GILLENWATER / ENG | \$120.00 |
| WHITE CAP INDUSTRIES | PUMP PISTON ASSY,TUBE ASY | \$218.07 |
| PTC SELECT | BOND PAPER | \$56.22 |
| General Fund Public Works Engineering Total | | \$394.29 |
| <u>General Fund Public Works Administration</u> | | |
| U S MECHANICAL SERVICES | A/C - PW VEH MAINT GARAGE | \$437.49 |
| MILLER JANITOR SUPPLY | SUPPLIES -16NPW00 | \$370.21 |
| CARDMEMBER SERVICE | WALMART - FLASH DRIVE | \$59.52 |
| General Fund Public Works Administration Total | | \$867.22 |
| <u>General Fund Public Works Equipment Maintenance</u> | | |
| RED WING SHOE STORE | BOOTS - S THOMAS / PW | \$108.00 |
| CINTAS CORPORATION #396 | SUPPLIES - PUBLIC WORKS | \$75.54 |
| CINTAS CORPORATION #396 | SHOP TOWELS/UNIFORMS | \$75.54 |
| CINTAS CORPORATION #396 | SHOP TOWELS/UNIFORMS | \$79.07 |

| <u>Vendor Name</u> | <u>Description</u> | <u>Transaction Amount</u> |
|-----------------------------|---------------------------|---------------------------|
| CINTAS CORPORATION #396 | TWLS/SUPPLIES - PUB WKS | \$77.04 |
| AUTO GLASS CENTER | TINT WINDSHIELD | \$227.35 |
| DENNISON CORPORATION | REPAIRS - 99 CRWN VIC | \$555.40 |
| DENNISON CORPORATION | RELAY ASSY | \$19.83 |
| DENNISON CORPORATION | LOCKSET-COMP (N-86) | \$37.61 |
| FASTENAL COMPANY | OHEX JAM | \$13.43 |
| FASTENAL COMPANY | TURN KEY | \$2.39 |
| FEDERAL SIGNAL CORPORATION | ALTERNATE FLASHER | \$25.40 |
| J MERLE JONES & SONS INC | CLAMP | \$49.44 |
| J MERLE JONES & SONS INC | CABLES, TERMINALS | \$44.86 |
| J MERLE JONES & SONS INC | FW SEPR, FILTERS | \$48.58 |
| KOENIG BODY & EQUIPMENT INC | FILTER | \$132.94 |
| MUTUAL WHEEL CO | HOURLMETER | \$42.34 |
| NAPA AUTO PARTS | DISC BRAKES | \$49.99 |
| PETERSEN INDUSTRIES INC | CYL BUSHING, PIN (5" TIP) | \$74.15 |
| PETERSEN INDUSTRIES INC | BUSHING CYL, PIN | \$74.15 |
| TERMINAL SUPPLY CO | HALOGEN BULBS | \$27.19 |
| WHOLESALE DIRECT INC | FLASH TUBES, REPL LENS | \$44.06 |
| DON OWEN TIRE SERVICE | TIRES FOR E05 | \$157.30 |
| DON OWEN TIRE SERVICE | TIRES FOR C15 | \$155.04 |
| DON OWEN TIRE SERVICE | RECAP- 315/80R22.5 DZT | \$147.00 |
| DON OWEN TIRE SERVICE | TIRE DISMOUNT/MOUNT | \$40.00 |
| DON OWEN TIRE SERVICE | REPAIR 11R22.5, SRV CALL | \$90.00 |
| DON OWEN TIRE SERVICE | TIRE REPAIR, SRV CALL | \$152.63 |
| DON OWEN TIRE SERVICE | SERVICE CALL, REPAIR | \$102.50 |
| HERITAGE MACHINE & WELDING | CY-BOLT, FRONT SPRING | \$456.08 |
| LAWSON PRODUCTS INC | DRILL BITS, WASHERS, | \$161.17 |
| MENARDS | LOCKNUTS | \$2.34 |
| MODAL MARKETING INC | PERMACURE II | \$52.94 |
| PRAIRIE INT'L TRUCKS INC | STARTER REPAIRS (S16) | \$380.39 |
| CARQUEST AUTO PARTS OF BLM | AIR FILTER - LD | \$18.25 |
| CARQUEST AUTO PARTS OF BLM | BRAKE ROTORS, PADS (C17) | \$107.56 |
| CARQUEST AUTO PARTS OF BLM | CUT-OFF WHL, THREAD LKR | \$14.25 |
| CARQUEST AUTO PARTS OF BLM | AIR SWIVEL HOSE | \$18.97 |
| LANDMARK FORD INC | DOME LIGHTS FOR SQUADS | \$195.00 |
| HI-LINE | CONNECTORS,KWIK-ON,CBLTIE | \$154.00 |

General Fund Public Works Equipment Maintenance Total \$4,289.72

General Fund Public Works Waste Removal

| | | |
|-----------------------------|---------------------------|-------------|
| ADS OF BLOOMINGTON | SEP/07 HAULING SERVICE | \$36,976.86 |
| MILL CREEK TRUCKING INC | SEPT HAULING SERVICE | \$3,831.00 |
| AMERICAN PEST CONTROL | PIGEON SRV - MAIN/HOVEY | \$100.00 |
| AMERICAN PEST CONTROL | PIGEON SRV - RECYC CNTR | \$70.00 |
| TIRE SHREDDERS UNLIMITED-IL | TIRES SHREDDED | \$290.00 |
| MENARDS | 1/8" DRILL BITS | \$7.47 |
| BLOOMINGTON TENT & AWNING | VINYL CEMENT | \$12.00 |
| RESOURCEFUL BAG & TAG INC | KRAFT BAGS (RECYCLING) | \$953.32 |
| CARDMEMBER SERVICE | FARM & FLEET - OIL & DEGR | \$45.77 |

General Fund Public Works Waste Removal Total \$42,286.42

General Fund Public Works Streets

| | | |
|---------------------------|---------------------------|-------------|
| READ'S SPORTING GOODS | L/S POLOS W/EMBROIDERY | \$74.85 |
| RED WING SHOE STORE | BOOTS - ASHENBREMER /PW | \$120.00 |
| RED WING SHOE STORE | BOOTS - J MILLR / PW | \$102.40 |
| LAESCH ELECTRIC INC | TRAFFIC SIGNAL MAINT-8/07 | \$15,839.87 |
| NELDNER FORD SALES INC | TRUCK TESTS - S12, S13 | \$39.00 |
| METEORLOGIX LLC | SUBSCRIPTION RENEWAL | \$2,388.00 |
| KEY EQUIPMENT & SUPPLY CO | SEG SET SAVER | \$1,920.00 |
| BENNINGTON TRUCK PARTS | T LITE (PW) | \$7.95 |
| Eric Ashenbremer | REIMBURSEMENT CDL RENEWAL | \$55.00 |
| ACE HARDWARE | SUPPLIES - PUB WKS | \$70.41 |

| <u>Vendor Name</u> | <u>Description</u> | <u>Transaction Amount</u> |
|---|------------------------------|---------------------------|
| ALEXANDER LUMBER COMPANY | 4X8 TREATED | \$38.98 |
| ALEXANDER LUMBER COMPANY | TRUSSLOK, RIPPNG BAR, | \$140.15 |
| ALEXANDER LUMBER COMPANY | WOOD LATH | \$9.65 |
| CLARK & BARLOW | BLACK BUSHINGS (2) | \$4.44 |
| MATHIS KELLY CONSTRUCTION | FAST CARTRIDGE | \$18.72 |
| MATHIS KELLY CONSTRUCTION | MASONRY NAILS,TAPE,CAP | \$19.87 |
| MENARDS | PIPE WRAP | \$2.66 |
| MENARDS | HEFTY TRASH BAGS | \$4.58 |
| ROAD-READY SIGNS | U-CHANNEL POSTS, TOP POSTS | \$3,263.15 |
| ROAD-READY SIGNS | STREET, SPECIAL SIGNS | \$1,226.00 |
| DIAMOND VOGEL PAINT | YELLOW PAINT, GLASS BEADS | \$10,668.25 |
| DIAMOND VOGEL PAINT | GLASS BEADS - LATEX | \$4,104.00 |
| DIAMOND VOGEL PAINT | 5 GALLONS WHITE PAINT | \$183.45 |
| DIAMOND VOGEL PAINT | 5 GALLONS WHITE PAINT | \$611.50 |
| MCLEAN COUNTY ASPHALT | BITUMINOUS SURFACE | \$620.09 |
| MCLEAN COUNTY ASPHALT | CREDIT - DUMP CONCRETE | (\$69.67) |
| MCLEAN COUNTY ASPHALT | COLDMIX/UPM | \$317.72 |
| MCLEAN COUNTY ASPHALT | CONCRETE REFUND | (\$47.32) |
| MCLEAN COUNTY CONCRETE | PILING MIX | \$1,634.00 |
| MCLEAN COUNTY CONCRETE | PILING MIX | \$322.50 |
| MCLEAN COUNTY MATERIALS CC | CONCRETE - PUBLIC WORKS | \$164.82 |
| General Fund Public Works Streets Total | | \$43,855.02 |
| <u>General Fund Parks & Recreation Aquatics</u> | | |
| NICOR GAS | AAC | \$236.13 |
| RAMCO FREEZER SERVICE & SAL | SHUT DOWN ICE MACHINES | \$145.00 |
| WALMART COMMUNITY BRC | SUPPLIES | \$9.96 |
| WALMART COMMUNITY BRC | PRODUCT RETURN | (\$397.11) |
| CARDMEMBER SERVICE | STAFF PIZZA | \$63.56 |
| General Fund Parks & Recreation Aquatics Total | | \$57.54 |
| <u>General Fund Parks & Recreation Recreation/Special Events</u> | | |
| CARDMEMBER SERVICE | WRIST BANDS FOR HAUNTED T | \$138.95 |
| General Fund Parks & Recreation Recreation/Special Events Total | | \$138.95 |
| <u>General Fund Parks & Recreation Recreation/Athletic Prog</u> | | |
| SPORT SUPPLY GROUP INC (BSN) | BURST REST BALL (4) | \$15.00 |
| SPORT SUPPLY GROUP INC (BSN) | BURST REST BALL (4) | \$87.96 |
| WALMART COMMUNITY BRC | SUPPLIES | \$72.27 |
| CARDMEMBER SERVICE | SUPPLIES | \$75.21 |
| General Fund Parks & Recreation Recreation/Athletic Prog Total | | \$250.44 |
| <u>General Fund Parks & Recreation Recreation/Teen Programs</u> | | |
| CITY OF BLOOMINGTON- P&R | DE RESERVATION-PAINTBALL TRP | \$33.00 |
| RON SMITH PRINTING CO INC | BASKETBALL FORMS | \$396.00 |
| General Fund Parks & Recreation Recreation/Teen Programs Total | | \$429.00 |
| <u>General Fund Parks & Recreation Recreation/Youth Programs</u> | | |
| CHAMPAIGN PARK DISTRICT | POOL ADMISSIONS | \$276.00 |
| CHAMPAIGN PARK DISTRICT | POOL ADMISSIONS | \$252.00 |
| WALMART COMMUNITY BRC | SUPPLIES | \$8.06 |
| WALMART COMMUNITY BRC | SUPPLIES | \$71.23 |
| WALMART COMMUNITY BRC | SUPPLIES | \$52.98 |
| CARDMEMBER SERVICE | SUPPLIES | \$13.28 |
| CARDMEMBER SERVICE | SUPPLIES | \$34.66 |
| CARDMEMBER SERVICE | SUPPLIES | \$34.66 |
| CARDMEMBER SERVICE | SUPPLIES | \$41.85 |
| SCHOOL SHOP | SILVER/GOLD STARS | \$7.37 |
| SCHOOL SHOP | SUPPLIES - ASEP (PARKS) | \$14.96 |
| General Fund Parks & Recreation Recreation/Youth Programs Total | | \$807.05 |
| <u>General Fund Parks & Recreation Golf Course</u> | | |
| RANEY TERMITE CONTROL INC | IRONWOOD - MONTHLY FEE | \$33.00 |
| CINTAS CORPORATION #396 | SUPPLIES - IRONWOOD | \$85.15 |
| CINTAS CORPORATION #396 | IRONWOOD TOWELS | \$75.00 |

| <u>Vendor Name</u> | <u>Description</u> | <u>Transaction Amount</u> |
|---|---------------------------|---------------------------|
| CINTAS CORPORATION #396 | CLEANING - RESTROOMS | \$75.00 |
| CINTAS CORPORATION #396 | CLEANING - RESTROOMS | \$23.50 |
| ILLINOIS PORTABLE TOILETS | SERVICED UNITS-IRONWOOD | \$90.00 |
| BILL'S KEY & LOCK SHOP | GOLF CART KEYS (IRNWD) | \$55.80 |
| WALMART COMMUNITY BRC | SUPPLIES | \$92.60 |
| DARNALL CONCRETE | FONDULAC FLAGSTONE | \$111.00 |
| DARNALL CONCRETE | FONDULAC FLAGSTONE | \$540.41 |
| DARNALL CONCRETE | ADHESIVE TUBES | \$9.45 |
| DARNALL CONCRETE | UNILOCK QUARRYSTONE CORNR | \$213.60 |
| General Fund Parks & Recreation Golf Course Total | | \$1,404.51 |
| <u>General Fund Parks & Recreation Administration</u> | | |
| CARDMEMBER SERVICE | SUPPLIES | \$21.49 |
| WRIGHT PRINTING CO | SEPT FUNDAMENTAL TIMES | \$900.97 |
| CARDMEMBER SERVICE | NATIONAL CONFERENCE FEES | \$565.00 |
| CARDMEMBER SERVICE | BUFFALO WILD WINGS | \$32.14 |
| General Fund Parks & Recreation Administration Total | | \$1,519.60 |
| <u>General Fund Parks & Recreation Golf Course Maintenance</u> | | |
| TOTAL PETROLEUM SERVICE CO | ELECTRICAL UNIONS,WIRE | \$523.46 |
| ILLINOIS STANDARD PARTS INC | CLAMPS,TAPE,WASHERS,BOLTS | \$29.60 |
| MIDWEST EQUIPMENT II | WATER PUMP INSPECTED | \$37.00 |
| WATER PRODUCTS CO OF ILLINO | COUPLINGS | \$150.00 |
| BRADFORD SUPPLY CO | PARTS-IRONWOOD | \$6.23 |
| PRO SOURCE ONE | CHEMICALS - IRNWOOD | \$2,103.20 |
| PRO SOURCE ONE | DITHANE - IRNWOOD | \$234.19 |
| General Fund Parks & Recreation Golf Course Maintenance Total | | \$3,083.68 |
| <u>General Fund Parks & Recreation Rec.- Before/After School</u> | | |
| HARBAUGH ENTERPRISES INC | SUGAR CREEK - ASEP | \$84.00 |
| HARBAUGH ENTERPRISES INC | PARKSIDE - ASEP | \$84.00 |
| HARBAUGH ENTERPRISES INC | FAIRVIEW- ASEP | \$84.00 |
| HARBAUGH ENTERPRISES INC | PRAIRIELAND - ASEP | \$91.00 |
| HARBAUGH ENTERPRISES INC | GROVE - ASEP | \$91.00 |
| HARBAUGH ENTERPRISES INC | OAKDALE - ASEP | \$84.00 |
| KOLDAIRE EQUIPMENT COMPAN | BOWLS | \$64.00 |
| WALMART COMMUNITY BRC | BSEP/ASEP SUPPLIES | \$3,115.49 |
| General Fund Parks & Recreation Rec.- Before/After School Total | | \$3,697.49 |
| <u>General Fund Parks & Recreation Parks Maintenance</u> | | |
| CCP INDUSTRIES INC | LEATHER GLOVES | \$141.73 |
| AMERENIP | OUTDOOR THEATER | \$6.36 |
| CLARK & BARLOW | OUTDR THEATER-IRRIGATION | \$2.12 |
| CRESCENT ELECTRIC SUPPLY CC | CREDIT - ORDER 341876-00 | (\$76.56) |
| MATHIS KELLY CONSTRUCTION | CAULKING GUN, LIMESTONE | \$23.67 |
| JOPAC COMPANIES | L/SPIN - R60 | \$14.54 |
| KOENIG BODY & EQUIPMENT INC | TRUCK REPAIRS | \$393.46 |
| MIDWEST EQUIPMENT II | TUBE | \$11.15 |
| MIDWEST EQUIPMENT II | SWITCH-PTO, SHIPPING | \$36.71 |
| MIDWEST EQUIPMENT II | SPRING, PAWL (SAW REPAIR) | \$3.87 |
| MIDWEST EQUIPMENT II | SWITCH-BAIL | \$7.63 |
| HOMETOWN TRUE VALUE | ENVIRONMENTAL CHARGE | \$29.25 |
| MARTIN BROTHERS | FILTERS | \$45.40 |
| MARTIN BROTHERS | SPRINGS (R303) | \$13.60 |
| MARTIN BROTHERS | 12V RELAY | \$15.20 |
| MARTIN BROTHERS | TIRE | \$42.89 |
| CARDMEMBER SERVICE | TRAVEL EXP(3) | \$195.00 |
| CHRIS KELLEY | CDL LICENSE | \$55.00 |
| ILLINOIS PORTABLE TOILETS | HANDICAP PORTABLE TOILET | \$95.00 |
| FASTENAL COMPANY | COIL CHN STRLNK 5/0 | \$613.47 |
| FASTENAL COMPANY | 1PC STD DEADBLWL-HAM | \$34.08 |
| COPY SHOP | IRONWOOD PATIO PRINTS | \$5.00 |
| CRESCENT ELECTRIC SUPPLY CC | SPLICE KIT | \$25.70 |

| <u>Vendor Name</u> | <u>Description</u> | <u>Transaction Amount</u> |
|--|---------------------------|---------------------------|
| CRESCENT ELECTRIC SUPPLY CC | BLACK 6IN-PACK (MAX) | \$8.46 |
| CRESCENT ELECTRIC SUPPLY CC | 120V WALLLU | \$106.23 |
| CRESCENT ELECTRIC SUPPLY CC | 70W 120V LIGHTS (IRNWD) | \$69.59 |
| CRESCENT ELECTRIC SUPPLY CC | GE MH LAMP | \$20.30 |
| CRESCENT ELECTRIC SUPPLY CC | 120V PLUG-INS,HOLE SEALS | \$24.43 |
| CRESCENT ELECTRIC SUPPLY CC | 70W HPS BAL, HPS STARTER | \$93.07 |
| DARNALL CONCRETE | 1/2" RE-ROD (GRADE 60) | \$10.80 |
| DARNALL CONCRETE | WHITE ROAD ROCK | \$58.20 |
| DRUMMOND AMERICAN CORP | PHAETON, TR GEL, HDWY DRY | \$132.54 |
| EVERGREEN FS INC. | DELUXE GRASS SEED | \$405.00 |
| HOHULIN BROTHERS FENCE CO | ALUM FENCE TIES, FORK PS | \$51.30 |
| ILLINOIS STANDARD PARTS INC | CHEM,DRILL BITS,PAINT, | \$93.94 |
| ILLINOIS STANDARD PARTS INC | PAINT,DRILL BITS,TIES | \$80.84 |
| MILLER JANITOR SUPPLY | BRWN ROLL TWL - 16NPR00 | \$35.23 |
| ROGERS SUPPLY COMPANY | CONDENSER PADS | \$36.13 |
| CARDMEMBER SERVICE | LEATHER CASE | \$32.24 |
| EVERGREEN FS INC. | DIESELEX (#4675450) | \$681.15 |
| MATHIS KELLY CONSTRUCTION | FIBER | \$11.25 |
| GLEN SAGERS | TREE PLANTING REIMBURSEME | \$60.00 |
| MCLEAN COUNTY CONCRETE | PILING MIX | \$602.00 |
| General Fund Parks & Recreation Parks Maintenance Total | | \$4,346.97 |
| <u>General Fund Parks & Recreation Tournament</u> | | |
| CUMMINS MID-STATES POWER IN | RENTAL GENERATOR, LABOR | \$2,454.50 |
| CUMMINS MID-STATES POWER IN | RENTAL GENERATOR, LABOR | \$2,100.50 |
| ECHO VALLEY MEATS | PORKLOIN, BEEF PATTIES | \$114.94 |
| General Fund Parks & Recreation Tournament Total | | \$4,669.94 |
| <u>General Fund Parks & Recreation Theater</u> | | |
| CRITERION PICTURES | HOUSE ON TELEGRAPH HILL | \$325.00 |
| STANDARD TRUCKING COMPANY | FILM SHIPMENT | \$149.50 |
| TWENTIETH CENTURY FOX FILM | NIGHT AT THE MUSEUM | \$250.00 |
| UNIVERSAL FILM EXCHANGE INC | (GUARANTEE - 10/16/07 | \$250.00 |
| WARNER BROS DISTRIBUTING IN | FILM RENTALS (7) | \$1,900.00 |
| WARNER BROS DISTRIBUTING IN | FILM RENTAL | \$250.00 |
| WARNER BROS DISTRIBUTING IN | FILM RENTAL | \$250.00 |
| DHL EXPRESS (USA) INC | FILM SHIPMENT | \$80.44 |
| MANHATTAN SHORT FILM FESTI | MANHATTAN SHORT FILM FEST | \$646.00 |
| BURKLUND DISTRIBUTORS INC | CONCESSIONS THEATER | \$545.08 |
| PEPSI COLA GENERAL BOTTLERS | SODA - THEATER / #63019 | \$87.40 |
| CARDMEMBER SERVICE | CHOCOLATE | \$181.87 |
| SPECIALTY IMPORT DISTRIBUTI | ALPINE SPRINGS WATER | \$121.80 |
| General Fund Parks & Recreation Theater Total | | \$5,037.09 |
| <u>General Fund Parks & Recreation Children's Disc Museum</u> | | |
| NICOR GAS | GAS SVC 8/21-9/21 2007 - | \$43.67 |
| WRIGHT PRINTING CO | POSTERS, TRIVIA FLYER-CDM | \$202.42 |
| HEARTLAND PRINTING | BIRTHDAY INVITATIONS | \$297.53 |
| ASTD-CENTRAL IL CHAPTER | EMPLOYEE DEV CONF 10-11-0 | \$30.00 |
| AVANTI'S ITALIAN RESTAURANT | GOND/PIZZA - CDM EVENTS | \$874.80 |
| AVANTI'S ITALIAN RESTAURANT | GOND/PIZZA - CDM EVENTS | \$56.25 |
| BARNES & NOBLE INC | CRAFT SUPPLIES - CDM | \$15.88 |
| BEST BUY GOV/ED LLC | SUPPLIES - CDM (1962) | \$175.96 |
| BILL'S KEY & LOCK SHOP | SEVEN KEYS MADE | \$11.41 |
| DENNY'S DOUGHNUTS & BAKER | SHEET CAKE, BAGELS - CDM | \$31.45 |
| WALMART COMMUNITY BRC | SUPPLIES | \$12.62 |
| WALMART COMMUNITY BRC | SUPPLIES | \$38.96 |
| WALMART COMMUNITY BRC | SUPPLIES | \$8.91 |
| WALMART COMMUNITY BRC | SUPPLIES | \$29.44 |
| WALMART COMMUNITY BRC | SUPPLIES | \$91.90 |
| WALMART COMMUNITY BRC | SUPPLIES | \$146.90 |
| WALMART COMMUNITY BRC | SUPPLIES | \$42.80 |

| <u>Vendor Name</u> | <u>Description</u> | <u>Transaction Amount</u> |
|---|---------------------------|---------------------------|
| LAKESHORE LEARNING MATERIALS | RESALE MERCHANDISE - CDM | \$512.05 |
| LOWE'S COMPANIES INC | PLSTIC-DIPS,STRGT VALVES | \$24.48 |
| ETCHESON SPA & POOL | PUMP SEAL | \$14.95 |
| ETCHESON SPA & POOL | 1HP IMPELLER | \$26.95 |
| CARDMEMBER SERVICE | WORLD WIDE DAY OF PLAY BA | \$398.00 |
| CARDMEMBER SERVICE | FLINN SCIENTIFIC | \$90.69 |
| CARDMEMBER SERVICE | FLINN SCIENTIFIC | \$36.15 |
| CARDMEMBER SERVICE | GOLF TEES- CONSTRUCTION Z | \$64.95 |
| CARDMEMBER SERVICE | PETCO - CRICKETS | \$6.70 |
| CARDMEMBER SERVICE | LINCOLN TRVL EXH | \$237.55 |
| CARDMEMBER SERVICE | PADILLY- TRACTOR/BARN | \$438.90 |
| CARDMEMBER SERVICE | MEDICAL AREA SUPPLIES | \$233.75 |
| CARDMEMBER SERVICE | EXHBIT SUPPLIES - CONST P | \$1,573.34 |
| CARDMEMBER SERVICE | POSTERS-READ FOR RECORD | \$120.88 |
| CARDMEMBER SERVICE | REDWORMS - BJHS LAB | \$28.00 |
| CARDMEMBER SERVICE | TARGET- BJHS LAB | \$20.41 |
| CONNECTICUT VALLEY BIOLOGICALS | POND SNAILS | \$486.00 |
| DISCOUNT SCHOOL SUPPLY | CRAFT SUPPLIES - CDM | \$130.23 |
| DISCOUNT SCHOOL SUPPLY | ARTS/CRAFTS SUPPLIES | \$221.87 |
| DISCOUNT SCHOOL SUPPLY | CRAFT SUPPLIES - CDM | \$287.68 |
| CAMP INVENTION | CAMP REGISTRATION (101) | \$19,012.00 |
| SHELLY HANOVER | READ FOR THE RECORD - SUP | \$11.96 |
| ANGIE MALITO | SCOUT & LL - SUPPLIES | \$39.90 |
| BETHANY THOMAS | CRITTER FOOD - LETTUCE & | \$12.96 |
| CARDMEMBER SERVICE | TABLES/CHAIRS - SAMS CLUB | \$2,653.51 |
| LEARNING CURVE BRANDS INC | M4 JD MONSTER TREADS | \$79.92 |
| LEARNING CURVE BRANDS INC | M4 JD MONSTER TREADS | \$11.40 |
| DROOL COOL | BURPERS - CDM | \$35.00 |
| General Fund Parks & Recreation Children's Disc Museum Total | | \$28,921.08 |
| <u>General Fund Concessions Aquatics</u> | | |
| WALMART COMMUNITY BRC | PRODUCT RETURNS | (\$105.04) |
| ARMATURE MOTOR & PUMP CO I | CONC STAND MOTOR (AAC) | \$76.33 |
| General Fund Concessions Aquatics Total | | (\$28.71) |
| <u>General Fund Concessions Recreation</u> | | |
| PEPSI COLA GENERAL BOTTLERS | PRODUCT RETURN CREDIT | (\$269.60) |
| WALMART COMMUNITY BRC | SUPPLIES | \$54.44 |
| WALMART COMMUNITY BRC | SUPPLIES | \$268.26 |
| CARDMEMBER SERVICE | PIZZA | \$246.45 |
| CHIDDIX JR. HIGH SCHOOL | CONCESS. HELP | \$500.00 |
| General Fund Concessions Recreation Total | | \$799.55 |
| <u>General Fund Concessions Golf Course</u> | | |
| PEPSI COLA GENERAL BOTTLERS | PEPSI PRODUCTS | \$64.69 |
| PEPSI COLA GENERAL BOTTLERS | SODA,CUPS- IRNWD/84871 | \$35.64 |
| PEPSI COLA GENERAL BOTTLERS | PEPSI PRODUCTS | \$613.87 |
| PEPSI COLA GENERAL BOTTLERS | SODA,CUPS- IRNWD/84871 | \$136.35 |
| WALMART COMMUNITY BRC | SUPPLIES | \$165.92 |
| WALMART COMMUNITY BRC | SUPPLIES | \$86.25 |
| WALMART COMMUNITY BRC | SUPPLIES | \$319.95 |
| General Fund Concessions Golf Course Total | | \$1,422.67 |
| General Fund | | \$304,432.37 |
| <u>Bone Grant Fund Inspections Bone Grant</u> | | |
| BRIAN & ALLISON HATCHER | 7 CLINTON PLACE | \$206.33 |
| Bone Grant Fund Inspections Bone Grant Total | | \$206.33 |
| Bone Grant Fund | | \$206.33 |
| <u>Community Development Fd Community Development Administration</u> | | |
| OCCUPATIONAL DEVELOPMENT | JANITORIAL SRV - SEP/07 | \$1,250.00 |
| Community Development Fd Community Development Administration Total | | \$1,250.00 |
| Community Development Fd | | \$1,250.00 |

| <u>Vendor Name</u> | <u>Description</u> | <u>Transaction Amount</u> |
|---|---------------------------|---------------------------|
| <u>Debt Service & Proj. Res.</u> | | |
| MAYES MODULAR BANKS INC | COMMERCE BANK PORTION | \$1,900.00 |
| Debt Service & Proj. Res. Total | | \$1,900.00 |
| Debt Service & Proj. Res. | | \$1,900.00 |
| <u>Capital Investment Fund Other-Capital Investment Capital Investment</u> | | |
| TREASURER, STATE OF ILLINOIS | BRIDGE REPLACEMENT | \$10,000.00 |
| STARK EXCAVATING | HOVEY AVE.RECONSTRUCTION | \$106,055.46 |
| CLARK & BARLOW | OUTDR THEATER-IRRIGATION | \$152.64 |
| BRADFORD SUPPLY CO | SELF PRIME PUMP | \$370.50 |
| BRADFORD SUPPLY CO | CREDIT FOR PUMP | (\$310.50) |
| BRADFORD SUPPLY CO | PV TEE SLIP,ADAPTER,BUSHN | \$15.18 |
| BRADFORD SUPPLY CO | PVC PIPE | \$90.12 |
| BRADFORD SUPPLY CO | PRIME OATEY,CEMENT OATEY | \$59.13 |
| BRADFORD SUPPLY CO | PV BUSHING | \$1.55 |
| CRESCENT ELECTRIC SUPPLY CC | WIRE, ALUM BOX, COVER | \$114.04 |
| CRESCENT ELECTRIC SUPPLY CC | HOFF-E PULL BOX | \$9.08 |
| DARNALL CONCRETE | WHITE ROAD ROCK | \$58.20 |
| DARNALL CONCRETE | WHITE ROAD ROCK | \$38.80 |
| MCLEAN COUNTY CONCRETE | CONCRETE (P/REC) | \$745.20 |
| MCLEAN COUNTY MATERIALS CC | FILL SAND, CR GRAVEL | \$127.05 |
| MCLEAN COUNTY MATERIALS CC | CRUSHED GRAVEL | \$199.78 |
| PLATINUM FUNDING SERVICES I | 400 AMP SRV-OUTDR THEATRE | \$4,430.00 |
| PLATINUM FUNDING SERVICES I | REPAIR UNDERGRND- THEATRE | \$750.06 |
| ROANOKE CONCRETE PRODUCTS | PALLETS RETURNED | (\$120.00) |
| ROANOKE CONCRETE PRODUCTS | WEDGEROCK TERRACE CAP | \$22.75 |
| ROANOKE CONCRETE PRODUCTS | CAP, ADHESIVE,WOOD PALLET | \$8.25 |
| ROANOKE CONCRETE PRODUCTS | CAP, ADHESIVE,WOOD PALLET | \$15.00 |
| ROANOKE CONCRETE PRODUCTS | CAP, ADHESIVE,WOOD PALLET | \$218.40 |
| ROANOKE CONCRETE PRODUCTS | ROANROCK,TERRACE BLOCK | \$30.00 |
| ROANOKE CONCRETE PRODUCTS | ROANROCK,TERRACE BLOCK | \$486.50 |
| ROANOKE CONCRETE PRODUCTS | PALLETS,WEDGEROCK TERRACE | \$15.00 |
| ROANOKE CONCRETE PRODUCTS | PALLETS,WEDGEROCK TERRACE | \$127.40 |
| DARNALL CONCRETE | 1/2" RE-ROD (GRADE 60) | \$90.00 |
| MCLEAN COUNTY CONCRETE | CONCRETE (P/REC) | \$993.60 |
| MCLEAN COUNTY MATERIALS CC | FILL SAND, CR GRAVEL | \$330.41 |
| COMMERCIAL IRRIGATION & TUI | IRONWOOD GOLF COURSE | \$463,918.97 |
| Capital Investment Fund Other-Capital Investment Capital Investment Total | | \$589,042.57 |
| Capital Investment Fund | | \$589,042.57 |
| <u>Uptown Roads Other-Capital Investment Roads & Storm Sewers</u> | | |
| BANK OF ILLINOIS | WORK- LIBRARY/ECOLOGY ACT | \$27,216.00 |
| Uptown Roads Other-Capital Investment Roads & Storm Sewers Total | | \$27,216.00 |
| Uptown Roads | | \$27,216.00 |
| <u>Uptown Program/Planning Other-Capital Investment Consultants/Studies/Misc</u> | | |
| DEATHERAGE, TERRY | PLUMBING REPAIRS- COMMBNK | \$235.00 |
| CARDOSI KIPER DESIGN GROUP | PHASE III - WAYFINDING | \$7,518.47 |
| Program/Planning Other-Capital Investment Consultants/Studies/Misc Total | | \$7,753.47 |
| Uptown Program/Planning | | \$7,753.47 |
| <u>Hotel Conference/Parking Other-Capital Investment Hotel Site</u> | | |
| EDC OF B-N AREA | ENT/ZONE DESIGNATION APP | \$32,670.40 |
| PARKING PLANNERS LP | HOTEL SRV THRU 8/07 | \$2,450.00 |
| Hotel Conference/Parking Other-Capital Investment Hotel Site Total | | \$35,120.40 |
| Hotel Conference/Parking | | \$35,120.40 |
| <u>Office/Retail B Other-Capital Investment Office/Retail B</u> | | |
| MAYES MODULAR BANKS INC | TOWN PORTION | \$1,900.00 |
| FARNSWORTH GROUP | BLDG B-ALLEY THRU 9/21 | \$1,099.13 |
| MCKEE ENVIRONMENTAL INC | 210 BROADWAY - FIXED FEE | \$525.00 |
| Office/Retail B Other-Capital Investment Office/Retail B Total | | \$3,524.13 |

| <u>Vendor Name</u> | <u>Description</u> | <u>Transaction Amount</u> |
|--|---------------------------|---------------------------|
| | Office/Retail B | \$3,524.13 |
| 2003 Bond Fund # 440 Finance Administration | | |
| BANK ONE, NA | FACILITY COMMITMENT FEE | \$5,323.96 |
| DIGITAL ASSURANCE CERTIFICA | ANNUAL FILING FEES-BONDS | \$500.00 |
| 2003 Bond Fund # 440 Finance Administration Total | | \$5,823.96 |
| 2003 Bond Fund # 440 | | \$5,823.96 |
| 2004 Bond Fund Finance Administration | | |
| DIGITAL ASSURANCE CERTIFICA | ANNUAL FILING FEES-BONDS | \$500.00 |
| 2004 Bond Fund Finance Administration Total | | \$500.00 |
| 2004 Bond Fund | | \$500.00 |
| 2005 Bond Fund Finance Administration | | |
| DIGITAL ASSURANCE CERTIFICA | ANNUAL FILING FEES-BONDS | \$500.00 |
| 2005 Bond Fund Finance Administration Total | | \$500.00 |
| 2005 Bond Fund | | \$500.00 |
| Water Fund | | |
| WATER PRODUCTS CO OF ILLINO | PATTERN SLV, MEGA LUGS | \$430.00 |
| WATER PRODUCTS CO OF ILLINO | 6X24 SS REPAIR CLAMP | \$170.00 |
| BONNIE BOITNOTT | 904&906 JERSEY REFUNDS | \$12.27 |
| TOM SKRENES | 1911 PARK WEST REFUND | \$7.82 |
| TOM SKRENES | 1909 PARK WEST REFUND | \$7.82 |
| FRIENDS- B P L%D MORTINCLOL | 310 WYLIE DR A129 REFUND | \$27.75 |
| KALINA, SCOTT | 1013 N OAK ST REFUND | \$3.68 |
| Water Fund Total | | \$659.34 |
| Water Fund Water Administration | | |
| DIGITAL COPY SYSTEMS LLC | MAINT 10/19-11/18 | \$43.20 |
| MCLEOD/USA | WATER ADMIN | \$5.75 |
| NEXTEL COMMUNICATIONS | WATER ADMIN | \$66.00 |
| VERIZON WIRELESS - PA | WATER METER CELLS | \$220.42 |
| SERVICE ENVELOPE CORP | #9 & #10 ENVELOPES | \$361.50 |
| SERVICE ENVELOPE CORP | #9 & #10 ENVELOPES | \$74.16 |
| CARDMEMBER SERVICE | IPWSOA MEAL EXPENSE - GER | \$16.59 |
| CARDMEMBER SERVICE | IPWSOA HOTEL EXPENSE - GE | \$305.30 |
| OFFICE DEPOT | PAPER, STAPLES,COPYHOLDER | \$30.06 |
| Water Fund Water Administration Total | | \$1,122.98 |
| Water Fund Water Capital Investment | | |
| LIQUIVISION TECHNOLOGY | CLEAN/INSPECT TANK #4 | \$2,460.00 |
| RSC EQUIPMENT RENTAL | JLG 800AJ-D-4WD, ENV FEE | \$4,759.00 |
| Water Fund Water Capital Investment Total | | \$7,219.00 |
| Water Fund Water Treatment | | |
| PDC LABORATORIES INC | FLUORIDE | \$15.00 |
| DAILY LABORATORIES | DEIONIZED WATER TEST | \$115.00 |
| EVERGREEN FS INC. | LIQUEFIED PETROLEUM | \$1,312.04 |
| METAMORA TELEPHONE CO | PAGER SERVICES - OCTOBER | \$53.59 |
| MCLEAN COUNTY MATERIALS CC#8 | STONE | \$73.29 |
| LOWE'S COMPANIES INC | 30X18 OAK, 2HDL JSPOUT | \$192.00 |
| MOTION INDUSTRIES INC | BEARINGS, LECTRA CLEAN | \$27.76 |
| MOTION INDUSTRIES INC | ROLLER WHEELS | \$166.75 |
| M A B PAINT STORE #803 | EXT POLE 2-4FT,4"CVR, | \$49.71 |
| M A B PAINT STORE #803 | XTR RGH CVR (WATER) | \$10.74 |
| M A B PAINT STORE #803 | GRID WHIZZ, UTILITY PAIL | \$15.36 |
| DELTA INDUSTRIES INC | SM OIL FILTERS | \$49.67 |
| OFFICE STATE FIRE MARSHAL | CARDOX-CO2 TANK | \$145.00 |
| BURWOOD GROUP INC | CISCO-CATALYST,SMARTNET | \$996.15 |
| VERIZON NORTH | WATER TREATMENT | \$124.07 |
| MCLEOD/USA | WATER TREATMENT | \$6.05 |
| NEXTEL COMMUNICATIONS | WATER TREATMENT | \$99.00 |
| Sue Sylvester | SYLVESTER - IPWSOA MILEAG | \$67.90 |
| WEAVER'S RENT-ALL | COMPACTOR PLATE | \$30.00 |

| <u>Vendor Name</u> | <u>Description</u> | <u>Transaction Amount</u> |
|-----------------------------|---------------------------|---------------------------|
| DOMESTIC UNIFORM & LINEN | TWLS/SUPPLIES (4474-1) | \$24.44 |
| ACE HARDWARE | SUPPLIES - WATER DEPT | \$93.89 |
| FASTENAL COMPANY | CARBON BRUSH, CORD | \$28.49 |
| BRADFORD SUPPLY CO | LS 90 SCH80,SXS UNION/CPL | \$182.21 |
| CRESCENT ELECTRIC SUPPLY CO | BOX, COVER,BUSHINGS | \$31.65 |
| DARNALL CONCRETE | MIX PORT-LIME | \$5.40 |
| FISHER SCIENTIFIC | INLAB EXPRT PRO ELCTRD | \$237.83 |
| FISHER SCIENTIFIC | 160ML BOTTLES 12/PK | \$111.29 |
| GRAINGER INC | TRIPOLY GLOVE, GATORADE | \$34.28 |
| GRAINGER INC | BULBS | \$6.24 |
| HACH COMPANY | DISODIUM SALT, HYD ACID | \$169.34 |
| MATHIS KELLY CONSTRUCTION | BACKER RODS | \$7.00 |
| MATHIS KELLY CONSTRUCTION | SONOLASTIC CAULKING | \$11.12 |
| MENARDS | 4" ANGLE GRINDER RETURNED | (\$52.68) |
| MENARDS | 4' ANGLE GRINDER | \$52.68 |
| MENARDS | EDGER, PLAY SAND | \$7.23 |
| MENARDS | SILICON RUBBER,PUTTY, | \$13.62 |
| MENARDS | ALL PURPOSE TUB | \$4.96 |
| MILLER JANITOR SUPPLY | FLD PAPER, TP - 16NW000 | \$76.38 |
| VWR INTERNATIONAL INC | BUFFER | \$148.03 |
| ENVIRONMENTAL RESOURCE AS | PLATE COUNTS, COLIFORM | \$418.58 |
| WEBER SCIENTIFIC | BIO INDICATOR PROSPORE | \$131.35 |
| MISSISSIPPI LIME COMPANY | 27.33 TN LIME | \$3,173.56 |
| MISSISSIPPI LIME COMPANY | 27.12 TN LIME | \$3,149.17 |
| MISSISSIPPI LIME COMPANY | 26.89 TN LIME | \$3,122.47 |
| MISSISSIPPI LIME COMPANY | 26.35 TN LIME | \$3,059.76 |
| PRISTINE WATER SOLUTIONS | LIQUID AQUADENE | \$1,152.80 |
| PRISTINE WATER SOLUTIONS | LIQUID BIOPURGE | \$495.00 |
| US ALUMINATE COMPANY INC | LIQ ALUMINUM SULFATE | \$2,255.55 |
| JCI JONES CHEMICALS INC | CHLORINE | \$1,756.00 |

Water Fund Water Treatment Total \$23,456.72

Water Fund Water Distribution

| | | |
|-----------------------------|---------------------------|--------------|
| WEST SIDE CLOTHING | JEANS - R MILLER/ WATER | \$34.00 |
| MINERVA SPORTSWEAR | T-SHIRTS | \$692.00 |
| RED WING SHOE STORE | SHOES - WATER | \$120.00 |
| MCLEAN COUNTY ASPHALT | BITUMINOUS SURFACE | \$188.68 |
| TNEMEC COMPANY INC | ENDURA-SHIELD, THINNER | \$713.13 |
| KOENIG BODY & EQUIPMENT INC | TAIL GATE CABLE | \$75.42 |
| KOENIG BODY & EQUIPMENT INC | TAIL GATE CABLE | \$3.34 |
| KOENIG BODY & EQUIPMENT INC | TAIL GATE CABLE | \$9.11 |
| VERIZON NORTH | WATER DISTRIBUTION | \$239.15 |
| MCLEOD/USA | WATER DISTRIBUTION | \$0.09 |
| NEXTEL COMMUNICATIONS | WATER DISTRIBUTION | \$1,287.00 |
| ACE HARDWARE | SUPPLIES - WATER DEPT | \$27.51 |
| WATER PRODUCTS CO OF ILLINO | 12" EXTENSION | \$322.67 |
| WATER PRODUCTS CO OF ILLINO | 5/8" BELLEVELE WASHERS | \$48.00 |
| CLARK & BARLOW | NYLON SLINGS, SHOVEL, | \$257.89 |
| BENNINGTON TRUCK PARTS | SOCKET | \$29.95 |
| EVERGREEN FS INC. | DELUXE GRASS SEED | \$70.00 |
| LAWSON PRODUCTS INC | BLUE PAINT, FREIGHT | \$178.20 |
| LAWSON PRODUCTS INC | BLUE PAINT, FREIGHT | \$16.50 |
| MCDONALD SUPPLY | COUPLINGS AND RODS | \$55.31 |
| MCDONALD SUPPLY | COUPLINGS AND RODS | \$43.00 |
| INTERSTATE ALL BATTERY CENI | C27-XHD BATTERY (9264) | \$69.95 |
| DIAMOND VOGEL PAINT | PAINT BRUSHES | \$30.10 |
| WATER RESOURCES INC | PSION PROGRMR W/CORD,COIL | \$1,916.00 |
| STARK EXCAVATING | TOWANDA/JERSEY-WTRMAIN | \$190,576.80 |

Water Fund Water Distribution Total \$197,003.80

Water Fund \$229,461.84

| <u>Vendor Name</u> | <u>Description</u> | <u>Transaction Amount</u> |
|---|----------------------------|---------------------------|
| <u>Sewer Fund Sewer Administration</u> | | |
| PROFESSIONAL ELECTRIC | START CAPACITOR | \$7.71 |
| NELDNER FORD SALES INC | TRUCK INSPECTION | \$19.50 |
| VERIZON NORTH | SEWER | \$253.35 |
| MCLEOD/USA | SEWER | \$3.17 |
| NEXTEL COMMUNICATIONS | SEWER | \$425.00 |
| DARNALL CONCRETE | RISER RING, MASON SAND | \$98.00 |
| DARNALL CONCRETE | RISER RING | \$42.00 |
| DARNALL CONCRETE | RISER RING | \$47.00 |
| DARNALL PRINTING | BUS CARDS - MIKE MYERS | \$63.00 |
| DRUMMOND AMERICAN CORP | GUYSER, FREIGHT | \$203.84 |
| Sewer Fund Sewer Administration Total | | \$1,162.57 |
| <u>Sewer Fund Sewer Capital Investment</u> | | |
| HOERR CONSTRUCTION INC | FIRESTONE SANITARY SEWER | \$24,586.20 |
| HOERR CONSTRUCTION INC | FIRESTONE SANI SEWER-III | \$82,311.30 |
| Sewer Fund Sewer Capital Investment Total | | \$106,897.50 |
| Sewer Fund | | \$108,060.07 |
| <u>Health & Dental Ins Fund Administration - City Mgr Health Insurance</u> | | |
| SUN LIFE ASSURANCE CO OF CA | MONTHLY PREMIUMS-10/1 | \$2,984.46 |
| HCC LIFE INSURANCE COMPANY | STOP LOSS PREMIUMS | \$14,825.26 |
| INNOVANT INC | PRESCRIPTION DRUGS | \$8,711.76 |
| INNOVANT INC | PRESCRIPTION DRUGS | \$9,544.09 |
| CCMSI MIDLAND, LLC | PREMIUMS/FEES (091798091) | \$7,170.40 |
| GALLAGHER BENEFIT SERVICES | ANNUAL CONSULTING SRV | \$9,000.00 |
| Health & Dental Ins Fund Administration - City Mgr Health Insurance Total | | \$52,235.97 |
| Health & Dental Ins Fund | | \$52,235.97 |
| <u>Gen Veh Replacement Fund Information Technology Administration</u> | | |
| DATALINK CORPORATION | SPECTRA T50 LIBRARY, MOUNT | \$8,970.24 |
| Gen Veh Replacement Fund Information Technology Administration Total | | \$8,970.24 |
| Gen Veh Replacement Fund | | \$8,970.24 |
| Grand Total | | \$1,375,997.35 |

TOWN COUNCIL ACTION REPORT

October 11, 2007

Motion to Accept the Water Treatment Plant Chemical Bids for November 2007 through October 2008 and to Authorize Staff to Negotiate an Extension of the Current Carbon Dioxide Contract.

PREPARED BY: Steve Gerdes, Water Director

REVIEWED BY: Mark R. Peterson, City Manager

BUDGET IMPACT: Sufficient funds are available in line item 502-8020-434.35-60 of the FY 2007-08 and FY 2008-09 Water Department budgets for the purchase of necessary chemicals. Actual cost will depend upon quantities required during the contract term.

STAFF RECOMMENDATION: Approval

ATTACHMENTS: Bid Tabulation

BACKGROUND

The Water Department takes bids for water treatment chemicals each year. Bids are taken for a one-year supply of each chemical to be delivered on an as needed basis throughout the contact period.

DISCUSSION/ANALYSIS

Bids for water treatment chemicals were received, opened and read on October 2, 2007 with 12 bidders responding. A recap of the bids is attached showing last year's suppliers and the cost as well as this year's bids. Recommendations for award are listed below and highlighted in bold on the bid recap.

| <u>Product</u> | <u>Supplier</u> | <u>Cost</u> |
|-------------------------|------------------------|--------------------|
| Lime | Mississippi Lime | \$123.00/ton |
| Carbon Dioxide | | |
| Aluminum Sulphate | Usalco | \$ 0.6460/gal |
| SK-7661 | Pristine | \$5.24/gal |
| SK-7691 | Pristine | \$5.24/gal |
| PHI-3125 | Pristine | \$10.30/gal |
| Fluoride | LCI | \$ 2.121/gal |
| Chlorine – ton cyl. | JCI Jones | \$470.00/ton |
| Chlorine – 150 lb. cyl. | JCI Jones | \$0.467/lb |

TOWN COUNCIL ACTION REPORT

Praxair submitted the only bid for carbon dioxide. The bid deleted the standard indemnification language and substituted language obligating the Town to protect Praxair from any claims made by our employees due to the negligence of Praxair.

The condition submitted by Praxair has been reviewed by the Legal Department and found to be not responsive to the specification in the bidding documents. Staff is therefore requesting permission to negotiate a contract extension with the current carbon dioxide supplier. The current supplier Air Liquide has a standard mutual indemnification clause protecting the Town from negligence by Air Liquide employees.

Staff is recommending the award of the chemical bids as outlined above with the exception of carbon dioxide and that staff be authorized to negotiate and extension of the current carbon dioxide contract at the current or lower price.

These bids represent an overall 6.5% increase in chemical costs based upon current usage rates. These increases are likely due to increases in fuel costs, insurance costs, and security improvements required of the chemical suppliers.

TOWN COUNCIL ACTION REPORT

October 11, 2007

Motion to Waive the Formal Bid Process and Award a Contract Under the US Communities Purchasing Program to NuToys Leisure Products of LaGrange, Illinois for the Purchase of Modular Skate Park Equipment in the Amount of \$63,988

PREPARED BY: Doug Wiggs, Asst. Director of Parks and Recreation

REVIEWED BY: Garry Little, Director of Parks and Recreation

BUDGET IMPACT: Funds for the project in the amount of \$75,000 were budgeted in line item 325-9820-452-60-10 for FY 2007-08

STAFF RECOMMENDATION: Approval

ATTACHMENTS: Skateboard Park Equipment Proposal, Design

BACKGROUND

The Parks and Recreation Department began the development of a skate park within Fairview Park over 15 years ago with the assistance of local skateboard enthusiasts. This facility has made a transformation from the first set of equipment constructed of wood, to the present features that were fabricated on site and are made of heavy gauge steel. These steel features were installed in 2001 and have served the skate board and BMX enthusiasts very well. Over the last 10-15 years, the technology and materials used by the skatepark industry have improved tremendously. In addition, the newer types of equipment offer more challenge for individuals using the skate parks. To continue to improve our facility, staff is recommending that the Town purchase several new pieces of equipment to replace and expand the types of equipment currently offered at the skate park.

DISCUSSION/ANALYSIS

The Parks and Recreation staff held three public meetings with the local skaters and BMX riders to gather input on the design and layout of the new skating equipment for the park. A number of skateboard equipment suppliers' designs were reviewed by staff, including skateboard equipment from NuToys Leisure Products. Through these meetings, staff was able to select 7 new pieces of equipment that were recommended by participants in the meetings to be purchased by the Town and installed at the skatepark.

The new features will be placed at the site adjacent to the existing steel structures. The skateboard park will be reconfigured to allow for the new equipment and to provide better use of the skating site. The new features will include a ½ pipe, ¼ pipe, grind rails and other pieces designed to create more innovative skating experiences for skaters of all ages and abilities. NuToys products offer a modular steel components made with interchangeable parts. The ride surface is a sound dampened, corrosion

TOWN COUNCIL ACTION REPORT

resistant, textured steel powder coated ride surface. In preparation for this enhancement, a local contractor will be repairing all cracks and sealing and re-coating the asphalt ride surface. This work will be done just prior to the installation of the new equipment to minimize the time the park would need to be closed.

The equipment supplier selected for the project, NuToys Leisure Products, is a very reputable supplier of playground and skatepark equipment and is an authorized US Communities Purchasing Program participant. The Town is a member of this organization and has used the program to purchase replacement playground equipment for park areas throughout the community. The equipment will require a 3-4 week delivery time and will be installed by Park Maintenance staff on site with the assistance of a NuToys representative. It is anticipated that the all of the upgrades at the skate park will be completed by late November of this year.

Therefore, staff recommends waiving the formal bidding process and approving the purchase of the new skate park equipment from NuToys Leisure Products of LaGrange, Illinois in the amount of \$63,988. The remaining funds from the \$75,000 budget will be used to provide the new surfacing and to upgrade site amenities, including a new drinking fountain and landscaping, as well as constructing a stairway to the skatepark entrance.



FAIRVIEW PARK SKATE PARK
NORMAL, IL

Box 2121
LaGrange, IL 60525
708-579-9055
1-800-526-6197
708-579-0109 (fax)
play@nutoys4fun.com
www.nutoys4fun.com

Obstacle 1

RAILS - OBSTACLES

1 145890-00-000 FLAT GRIND RAIL 10FT

Obstacle 2

MINI HALF PIPES - OBSTACLES

1 151952-00-000 MHP4X12-CH BNK4X8 STE

Obstacle 3

ACCESSORIES/OPTIONS

1 149136-00-000 STAIRS 3FT X 4FT WIDE

149214-00-000 RAILING 3FT STAIRS

00-000 3FT LEDGE UP/ACROSS

QUARTER PIPES - OBSTACLES

1 151776-00-000 QTR5X12 DROPIN BNK-ST

Obstacle 4

GRIND BOXES/LEDGES - OBSTACLES

1 146673-00-000 STREET GRINDBOX/LEDGE

Obstacle 5

RAILS - OBSTACLES

1 145891-00-000 FLAT GRIND RAIL 10FT

Obstacle 6

URBAN SERIES - OBSTACLES

1 146441-00-000 SKATE BENCH

Obstacle 7

GRIND BOXES/LEDGES - OBSTACLES

2 146023-00-000 STREET GRINDBOX 5x47x

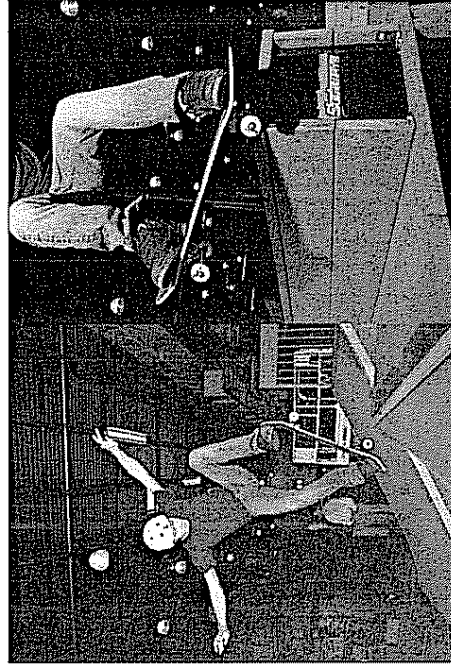
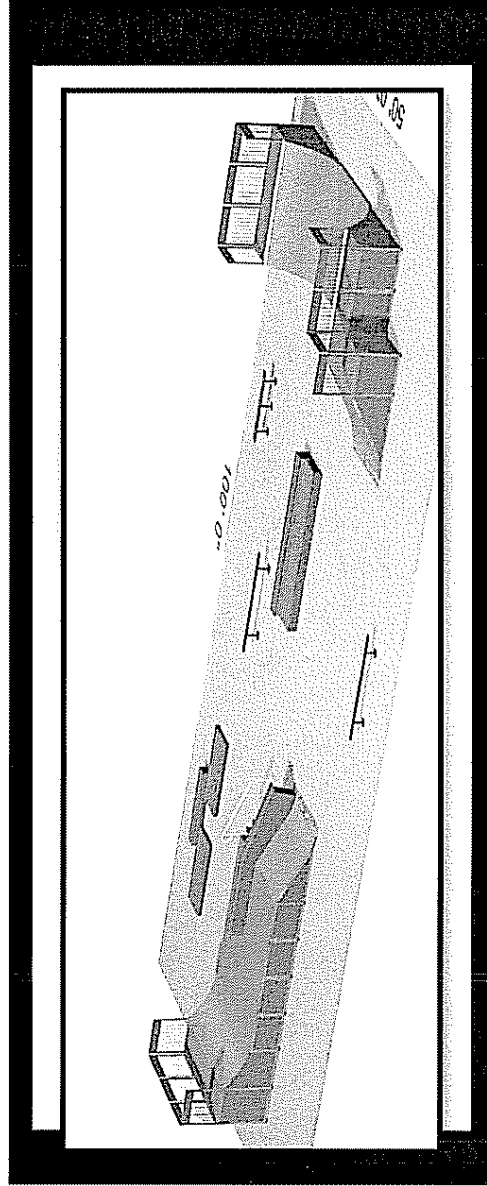
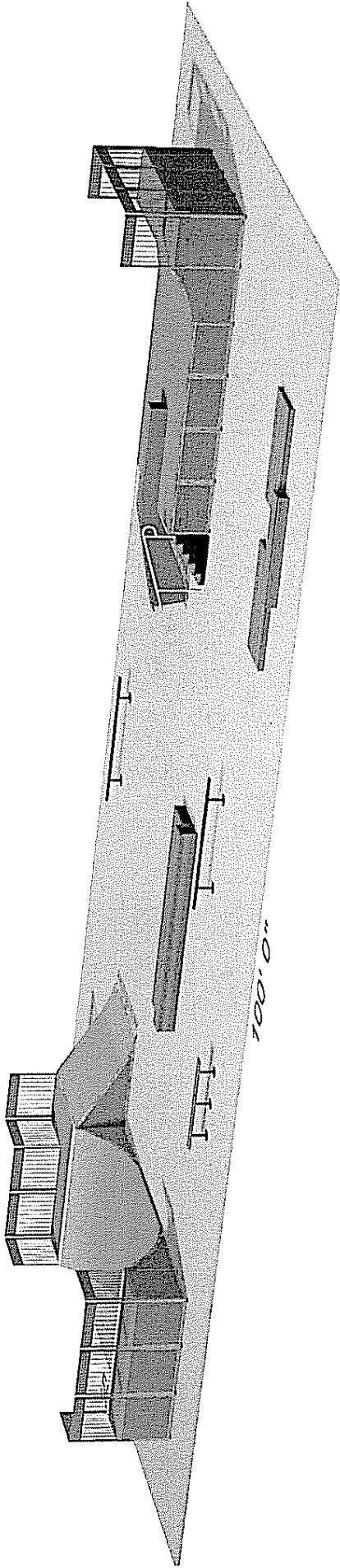
146020-00-000 STREET LEDGE 11x19x96

Obstacle Plates

ACCESSORIES/OPTIONS

57 135555-00-000 ROUND PLATE F/ASPHALT

| | |
|-------------------------|-------------|
| SUBTOTAL: | \$66,598.00 |
| US COMMUNITIES DISCOUNT | (-3995) |
| SHIPPING | 1,385 |
| TOTAL DELIVERED PRICE | 63,988 |



Fairview Park

Normal, IL

SW3_101_19180-1-2

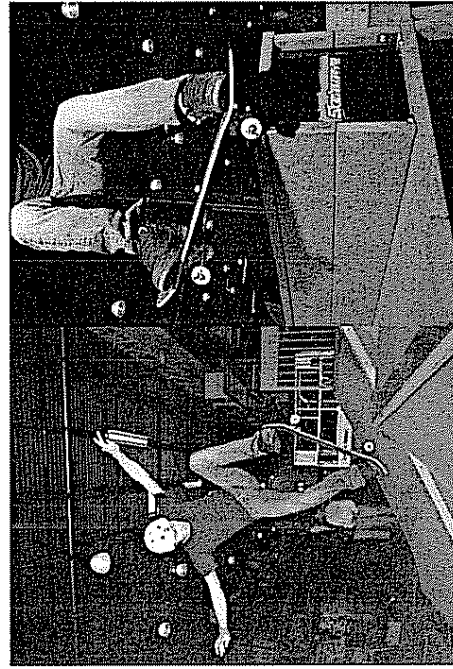
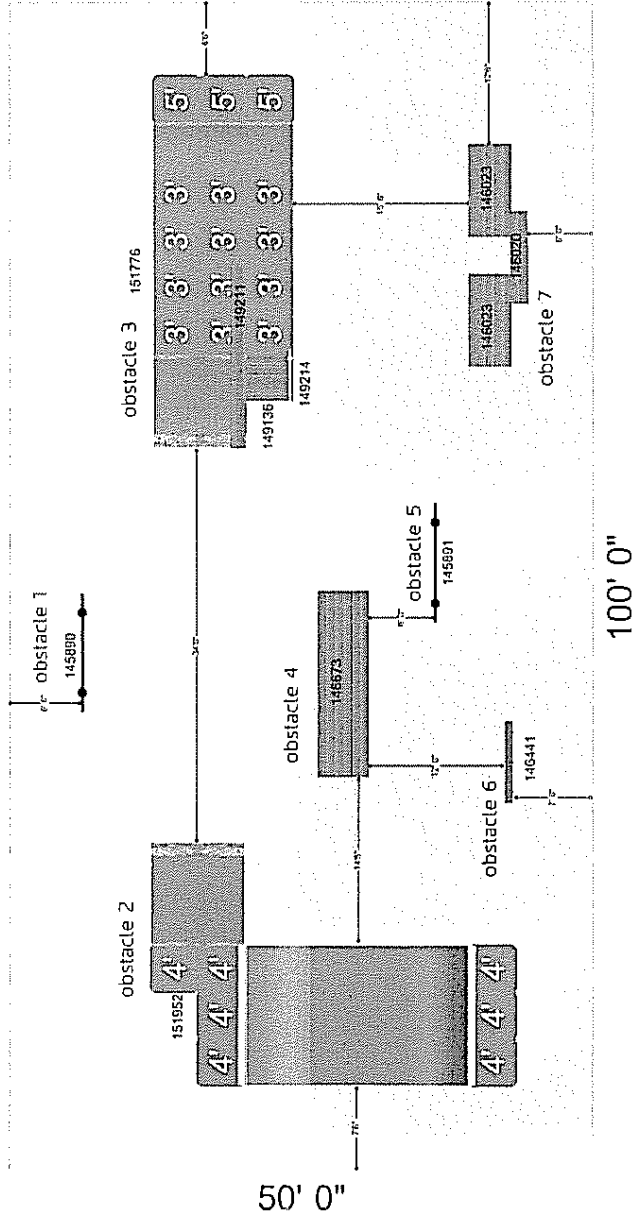
7/26/2007

nuttoys
Leisure Products



skatetwaveTM
Modular Skatepark Systems

- obstacle 1 - flat grind rail
- obstacle 2 - mini half pipe combo
- obstacle 3 - quarter pipe drop down/stairs/
grind ledge/stair rail
- obstacle 4 - grind box/grind ledge
- obstacle 5 - flat grind rail
- obstacle 6 - skate bench
- obstacle 7 - manual pads/grind ledge



Skatewave™
Modular Skatepark Systems

n5toys
Leisure Products

Fairview Park

Normal, IL

SW3_101_19180-1-2

7/26/2007

TOWN COUNCIL ACTION REPORT

October 11, 2007

Motion to Initiate a Zoning Map Amendment (Near East Pine Street between the One Normal Plaza PUD and the Savannah Green PUD)

PREPARED BY: Mercy Davison, Town Planner

REVIEWED BY: Mark R. Peterson, City Manager
Steven D. Mahrt, Corporation Counsel

BUDGET IMPACT: N/A

STAFF RECOMMENDATION: Approval

ATTACHMENTS: Current Published Zoning Map; Current Zoning per Ordinance; Proposed Corrected Zoning Map

BACKGROUND

The Parks and Recreation Department is preparing to build a pavilion at the One Normal Plaza PUD on Lot 29 of the One Normal Plaza PUD near the Town soccer fields. In reviewing the proposed location for the pavilion, Town staff discovered certain discrepancies in the zoning map. This report is intended to explain how the discrepancies may have occurred and what must be changed on the zoning map to remedy the situation.

DISCUSSION/ANALYSIS

The discrepancies can be traced back to the late 1990s. It appears that Lot 29 (the proposed pavilion site) was removed from the One Normal Plaza PUD and rezoned to S-1 University District in 1997 when it was transferred to ISU as part of a land swap for the water distribution building site. Lot 30 (the water distribution site) was then added to the One Normal Plaza PUD and rezoned to C-1 Multi-Use Office District.

In 2000 Lot 29 and other land adjacent to One Normal Plaza was conveyed from ISU to the Town. (This was around the time the university sold other adjoining land for the Savannah Green development.) Town staff has found a zoning ordinance that appears to rezone lot 29 from S-1 to R-1B in conjunction with the Savannah Green rezoning.

In 2000 the Savannah Green project was rezoned from S-1 University District to R-1B Single Family Residential, and the Mother's Park in Savannah Green was rezoned to S-2 Public Lands & Institutions.

In 2004 Savannah Green conveyed all of Outlot 372 in the 9th addition to Savannah Green to the Town. This outlot was reflected as "park" on the approved PUD plan and should have been rezoned to S-2 Public Lands & Institutions. The rezoning never happened and Outlot 372 remains zoned R-1B from the 2000 Savannah rezoning.

TOWN COUNCIL ACTION REPORT

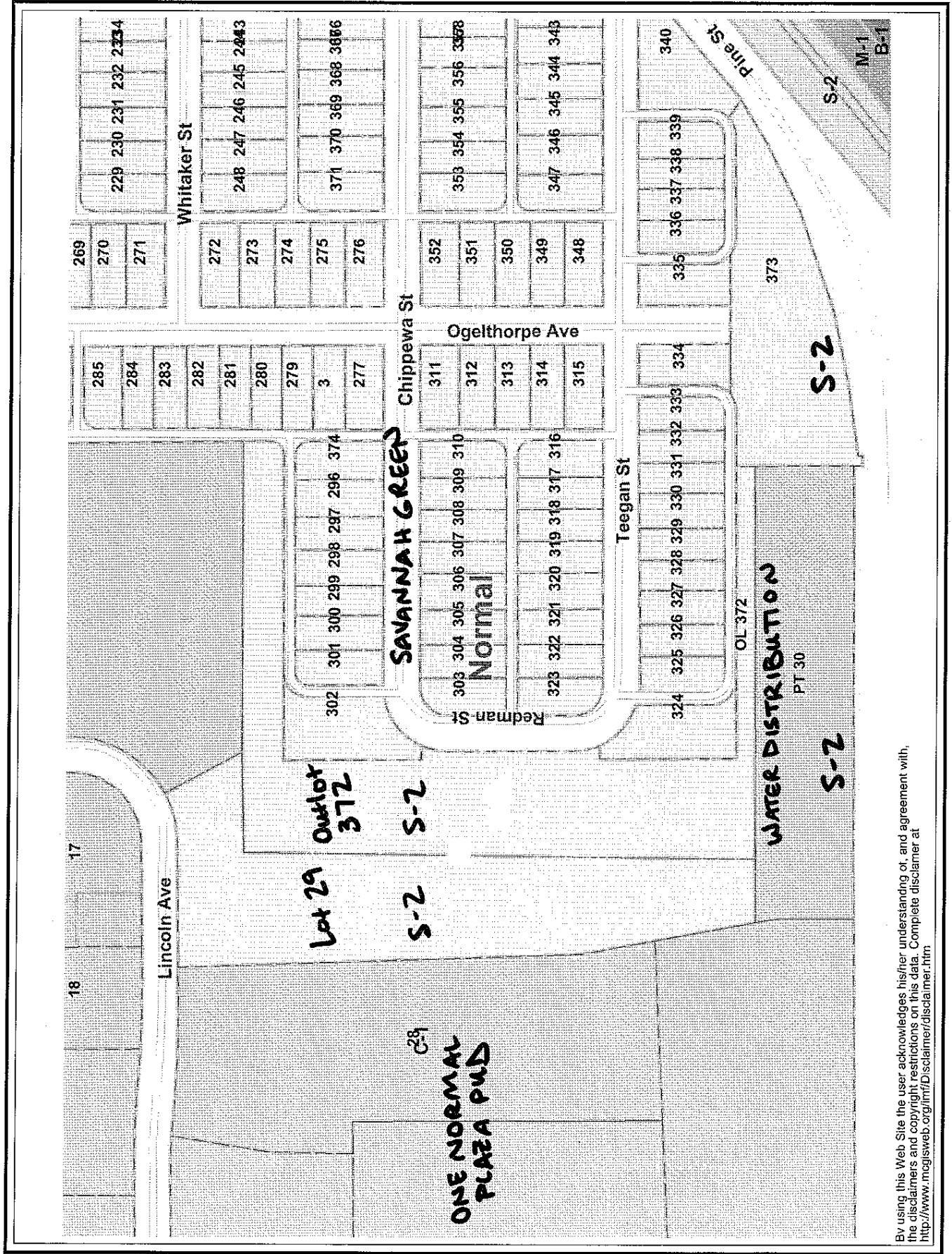
Outlot 372 is immediately east of Lot 29, which is also still zoned R-1B Single Family. Because Lot 29 is public park land (future pavilion location), it also needs to be rezoned to S-2 Public Lands & Institutions.

To further complicate the matter, the published zoning map currently shows Lot 29, Lot 30, Outlot 372, and Lot 373 all zoned S-2 Public lands and Institutions. Lot 373 has always been part of the Savannah Green PUD (location of the neighborhood's community building) and should be zoned R-1B Single Family Residential to correspond with the rest of the Savannah Green PUD.

In sum, staff supports the following rezoning and clarifications:

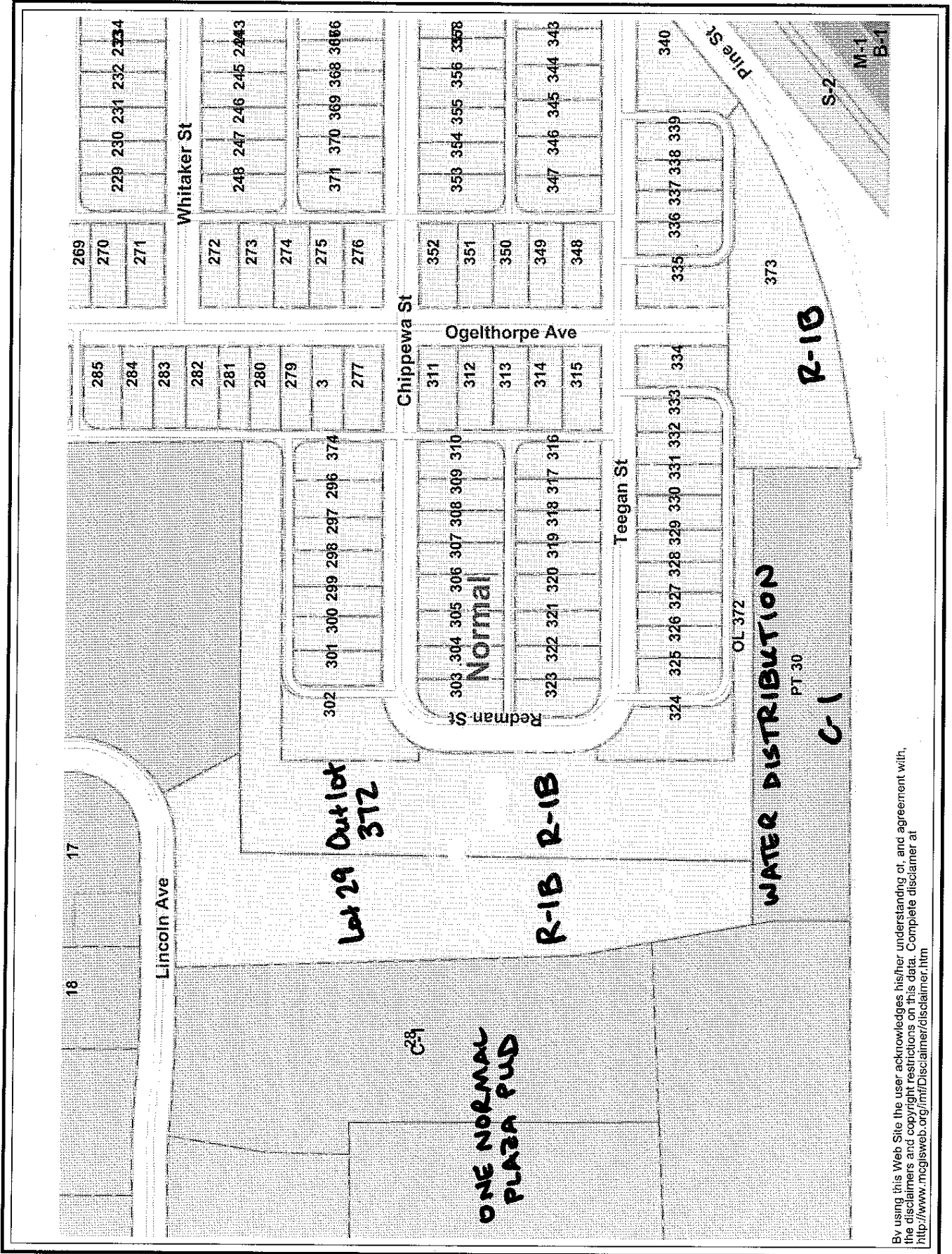
1. Lot 29 and Outlot 372 are publicly owned park land and are not part of the One Normal Plaza PUD or the Savannah Green PUD. Thus, both should be zoned S-2 Public Lands & Institutions.
2. Lot 30 is the Town's water distribution plant, which should be zoned S-2 Public Lands & Institutions and which should not be part of the One Normal Plaza PUD.
3. Lot 373 should be zoned R-1B Single Family Residential to correspond with the rest of the Savannah Green PUD.

Town staff recommends that the Town Council initiate this zoning map amendment and petition to remove Lot 30 from the One Normal Plaza PUD. These matters will be forwarded to the Planning Commission for a public hearing.



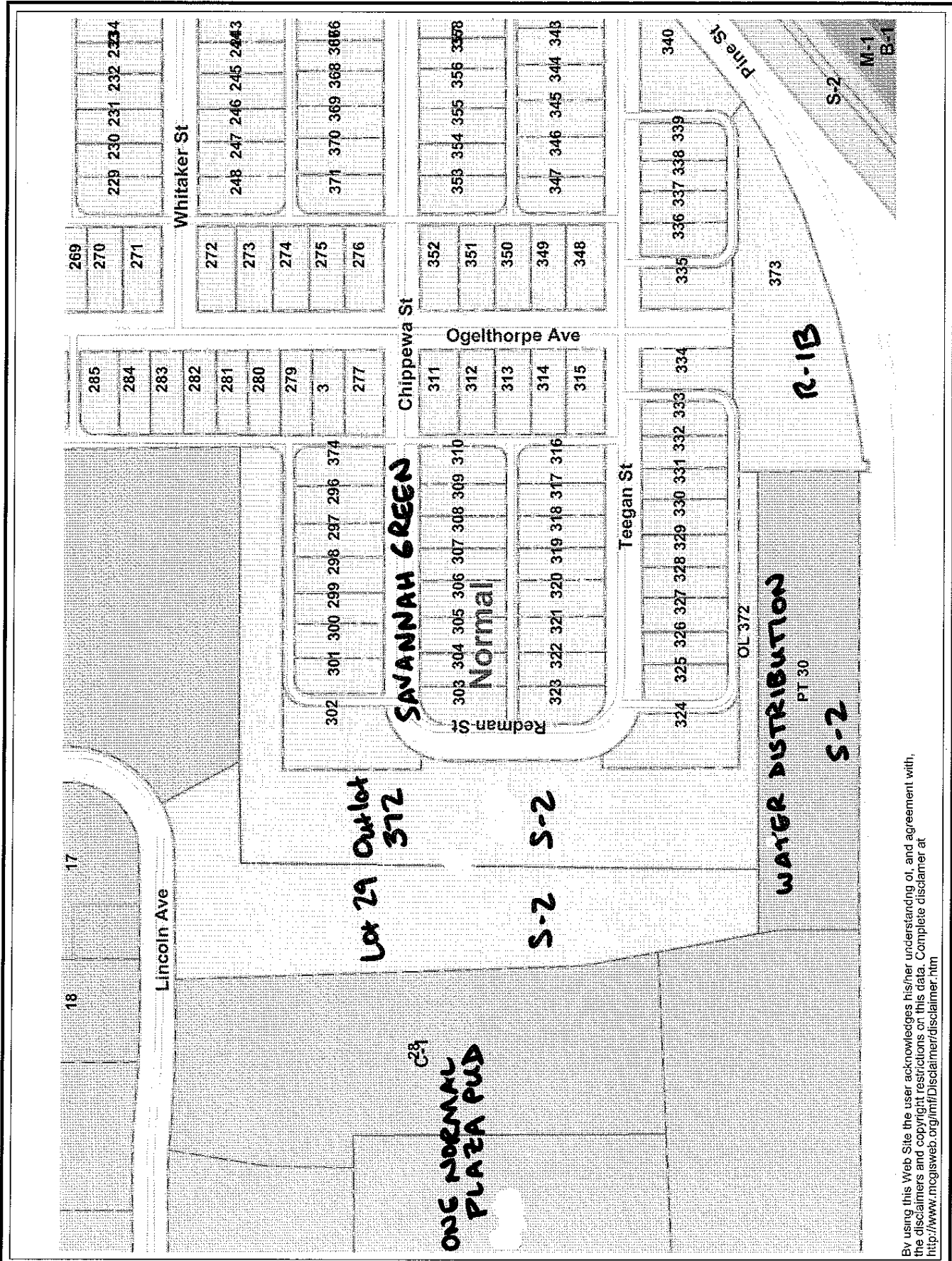
By using this Web Site the user acknowledges his/her understanding of, and agreement with, the disclaimers and copyright restrictions on this data. Complete disclaimer at <http://www.mcgsweb.org/info/Disclaimer.htm>

CURRENT PUBLISHED ZONING MAP



By using this Web Site the user acknowledges his/her understanding of, and agreement with, the disclaimers and copyright restrictions on this data. Complete disclaimer at <http://www.mcgisweb.org/imf/Disclaimer/disclaimer.htm>

CURRENT ZONING PER ORDINANCE



By using this Web Site the user acknowledges his/her understanding of, and agreement with, the disclaimers and copyright restrictions on this data. Complete disclaimer at <http://www.mcgsweb.org/info/Disclaimer/Disclaimer.htm>

PROPOSED ZONING MAP

TOWN COUNCIL ACTION REPORT

October 11, 2007

Motion to Authorize the Preparation of the 2007 Property Tax Levy Ordinance

PREPARED BY: Ronald J. Hill, Director of Finance

REVIEWED BY: Mark R. Peterson, City Manager
Pamela S. Reece, Assistant City Manager

BUDGET IMPACT: The proposed levy will result in property tax revenue totaling \$8,175,000 in FY 2008-09. This amount represents a \$377,009 (4.83%) increase over the property tax collection during the current fiscal year. However, due to anticipated increases in the Town's overall equalized assessed property values, the Town's property tax rate is expected to decrease from \$1.0874 to \$1.0855.

STAFF RECOMMENDATION: Approval

ATTACHMENTS: Summary of proposed tax levy, and historical Town of Normal property tax rates.

BACKGROUND

The State of Illinois Truth in Taxation Statute requires that the Council meet at least 20 days prior to approving the property tax levy ordinance to determine the amount of the levy. The law further requires that a comparison must be made to the previous year's levy to determine the percent of increase.

State law also requires a levy for outstanding G.O. Bonds and Special Service Area bonds (Shoppes at College Hills). This levy can be abated if funds are on hand for principal and interest payments. Even though it might be the intent of the taxing entity to abate this levy, it must be included.

DISCUSSION/ANALYSIS

Staff is recommending that the net property tax levy for 2007 be established at \$8,175,000, which represents a \$377,009 (4.83%) increase over last year's extended levy. A truth in taxation notice will not be required because the levy increase is below 5%.

In accordance with Council policy, the General Fund levy is equal to the prior year levy (\$1,600,000). Other General Fund revenues have been used in addition to the tax levy to fund Social Security and IMRF (pension) costs. The total estimated amount covered by other General Fund revenues for the 2007 tax year is \$356,000. The purpose in using other General Fund revenues has been to reduce the rate of property tax increase. Excluding the Library, retirement levies account for 72% of the total levy proposed. The proposed Library levy will result in a deficit of \$188,000. Several years ago, staff recommended a reduction in the fund

TOWN COUNCIL ACTION REPORT

balance of the Library Fund in order to keep the tax levy as low as possible. Future year tax levies will gradually increase in order to eliminate this operating deficit.

Based upon anticipated growth in equalized assessed valuation within the corporate limits of Normal, staff is projecting a total 2007 property tax rate (including Town and Library) of \$1.0855. The 2006 tax rate was \$1.0874. This projection assumes a 5% increase in equalized assessed valuation. Actual assessed values will not be known until July 2008. The average increase in EAV over the past nine years has been 6.3%. An assessed value increase above the projected 5% will produce a property tax rate that is less than the projected \$1.0855.

Summary of Proposed Tax Levy

Listed below is a summary of the proposed 2007 levy, which will be collected during calendar year 2008 for the Fiscal Year 2008-2009.

| <u>Fund</u> | <u>Actual Extended 2006 Levy</u> | <u>Proposed 2007 Levy</u> | <u>Net Change</u> |
|-------------------------|--------------------------------------|-------------------------------|-------------------|
| General Fund | \$1,600,010 | \$1,600,000 | \$ (10) |
| Police Pension | 1,233,000 | 1,262,000 | 29,000 |
| Fire Pension | 1,054,982 | 1,085,000 | 30,018 |
| IMRF | 750,013 | 810,000 | 59,987 |
| Social Security | <u>800,005</u> | <u>870,000</u> | <u>69,995</u> |
| Subtotal | \$5,438,010 | \$5,627,000 | 188,990 |
| Library | <u>2,359,981</u> | <u>2,548,000</u> | <u>188,019</u> |
| TOTAL | \$7,797,991 | \$8,175,000 | \$ 377,009 |
| Net Percent of Increase | | | 4.83% |

Bond Levy

| | |
|----------------------------------|--------------------|
| 2003 Bond Issue | \$ 898,349 |
| 2004 Bond Issue | \$ 568,197 |
| 2005 Bond Issue | \$ 536,098 |
| 2006 Bond Issue | \$ 424,620 |
| <u>2007 Bond Issue</u> | <u>\$1,370,000</u> |
| <u>Total amount to be abated</u> | <u>\$3,797,264</u> |

| | |
|------------------------------|--------------------|
| <u>SSA Bond Issue*</u> | <u>\$ 635,888</u> |
| <u>Total Bond Issue Levy</u> | <u>\$4,433,152</u> |

Total Property Tax Levy \$12,608,152

*Needed abatement calculation will be performed in January for this SSA Bond Issue.

| <u>Tax Rates</u> | <u>Actual</u> | <u>Est.</u> | <u>Net Change</u> |
|------------------|---------------|---------------|-------------------|
| Town Tax Rates | 0.7582 | 0.7472 | -0.0110 |
| Library Rates | <u>0.3292</u> | <u>0.3383</u> | <u>0.0091</u> |
| TOTAL RATE | 1.0874 | 1.0855 | -0.0019 |
| EAV: | \$717,236,194 | | |

TOWN COUNCIL ACTION REPORT

Comparison Between the 2007 Proposed Levy and the 2008-2009 Budget Projection

| <u>Fund</u> | <u>Budget 2008-09</u> | <u>Proposed 2007 Levy</u> | <u>Net Change</u> |
|-------------|-----------------------|---------------------------|-------------------|
| General | \$1,600,000 | \$1,600,000 | \$ 0 |
| Police | 1,295,000 | 1,262,000 | (33,000) |
| Fire | 1,107,000 | 1,085,000 | (22,000) |
| IMRF | 790,000 | 810,000 | 20,000 |
| Soc. Sec. | <u>839,000</u> | <u>870,000</u> | <u>31,000</u> |
| Subtotal | \$5,631,000 | \$5,627,000 | \$ (4,000) |
| Library | <u>2,548,000</u> | <u>2,548,000</u> | <u>0</u> |
| TOTAL | \$8,179,000 | \$8,175,000 | \$ (4,000) |

TOWN COUNCIL ACTION REPORT

**TOWN OF NORMAL
PROPERTY TAX RATES**

| <u>Tax Year</u> | <u>Normal General</u> | <u>Normal Retirement</u> | <u>Library</u> | <u>Sub Total</u> | <u>All Other Governments</u> | <u>Total</u> |
|-----------------|-----------------------|--------------------------|----------------|------------------|------------------------------|--------------|
| 1987 | .8436 | .2580 | .2439 | 1.3455 | 5.8820 | 6.6249 |
| 1988 | .7241 | .1760 | .2241 | 1.1242 | 5.5007 | 7.2275 |
| 1989 | .4776 | .3272 | .4377 | 1.2425 | 5.3139 | 6.5564 |
| 1990 | .4929 | .3171 | .4804 | 1.2904 | 5.4532 | 6.7436 |
| 1991 | .4966 | .3191 | .4949 | 1.3106 | 5.6248 | 6.9354 |
| 1992 | .5606 | .3550 | .4855 | 1.4011 | 6.0783 | 7.4794 |
| 1993 | .5172 | .3606 | .4636 | 1.3414 | 6.0359 | 7.3773 |
| 1994 | .4548 | .3573 | .4307 | 1.2428 | 6.0188 | 7.2616 |
| 1995 | .4241 | .3501 | .4016 | 1.1758 | 5.9989 | 7.1747 |
| 1996 | .3871 | .3535 | .3839 | 1.1245 | 5.9007 | 7.0252 |
| 1997 | .3583 | .3517 | .3749 | 1.0849 | 5.8337 | 6.9186 |
| 1998 | .3424 | .3598 | .3708 | 1.0730 | 5.8315 | 6.9045 |
| 1999 | .3207 | .3699 | .3647 | 1.0553 | 5.8233 | 6.8786 |
| 2000 | .3036 | .3829 | .3624 | 1.0489 | 6.0349 | 7.0838 |
| 2001 | .3326 | .4116 | .3561 | 1.1003 | 5.9777 | 7.078 |
| 2002 | .3079 | .4203 | .3411 | 1.0693 | 6.0117 | 7.081 |
| 2003 | .2933 | .5465 | .3476 | 1.1874 | 6.1756 | 7.363 |
| 2004 | .2611 | .5652 | .3406 | 1.1669 | 6.2981 | 7.465 |
| 2005 | .2425 | .5503 | .3335 | 1.1263 | 6.2090 | 7.3353 |
| 2006 | .2231 | .5351 | .3292 | 1.0874 | 6.2368 | 7.3242 |
| 2007 (est.) | .2125 | .5347 | .3383 | 1.0855 | | |

Assessed values for 2007 are projected to increase 5%.

TOWN COUNCIL ACTION REPORT

October 11, 2007

Resolution Authorizing Execution of an Agreement with Ratio Architects of Champaign, Illinois for a City Hall Office Space Study and Approval of Required Budget Amendment

PREPARED BY: Mark R. Peterson, City Manager

BUDGET IMPACT: If approved, this agreement will require an allocation of \$20,000 from General Fund Reserves as funds were not appropriated for this activity in the FY 2007/08 Operating Budget.

STAFF RECOMMENDATION: Approval

ATTACHMENTS: Proposed Resolution and Proposal from Ratio Architects

BACKGROUND

As the Council is well aware, over the last few years available space in the City Hall/Police facility has become very scarce. As the size of Town staff has grown, nearly all available space in the City Hall/Police complex is being utilized for offices, meeting space, and/or storage space. In addition, the City Hall Annex building, immediately to the east of City Hall along Linden Street, is also completely full. And finally, there is also no additional room for staff expansion within the Parks and Recreation Annex located at 611 S. Linden. In this regard, staff has been looking at a number of alternatives to address the office space needs for these municipal operations.

Staff recently solicited a proposal from Ratio Architects of Champaign, Illinois to evaluate the possible use of the upper level office areas of the Multimodal Transportation Center, planned for Uptown Normal, for municipal offices and meeting space. It is uncertain when this facility will be constructed as it is dependant upon the allocation of additional State and Federal funding. However, staff believes this facility may present a very viable solution to address the office space needs of our municipal government.

DISCUSSION/ANALYSIS

A copy of a proposal submitted by Ratio Architects has been attached. The proposal outlines a project scope which would involve an evaluation of the current and future office space needs of the Town of Normal as well as a determination of how those space needs could be addressed in the future Multimodal Transportation Center building. In addition to including municipal offices in the transportation building, it is also a possibility that a new Town Council Chambers and related conference rooms might also be located in that facility to address a long standing problem of inadequate meeting facilities for the Town Council, Planning Commission, Zoning Board and other public bodies.

TOWN COUNCIL ACTION REPORT

In addition to determining whether or not the transportation center could provide a viable alternative venue for certain municipal offices and for Town Council meeting facilities, Ratio would also determine how the existing City Hall building might be utilized more effectively once some offices are transferred over to the Multimodal Transportation Center. It would be the hope of the staff that many other municipal operations, including those currently housed in the two annex buildings, could be moved over to the existing City Hall building rendering those annex facilities as surplus.

The proposal that is attached to this report presented by Ratio Architects suggests a total cost for the services, including reimbursable expenses, of \$20,000. Obviously, considerable planning work would have to be undertaken by Town staff and all of the affected operating departments to assist the design professionals with Ratio Architects to develop a meaningful space utilization plan in both the Transportation Center building and in the existing City Hall building. It would be staff's intent to have this work completed by November so the results of this space planning study can be discussed with Council as part of your strategic planning retreat scheduled for November 9th and 10th.

As this is an unbudgeted item, staff would recommend that the Council authorize \$20,000 from General Fund Reserves to cover the cost of this professional engagement of Ratio Architects.

RESOLUTION NO. _____

A RESOLUTION AUTHORIZING EXECUTION OF AN AGREEMENT BETWEEN THE TOWN OF NORMAL AND RATIO ARCHITECTS, INC. FOR THE ASSESSMENT OF SPACE NEEDS IN THE MULTIMODAL TRANSPORTATION CENTER PROJECT

WHEREAS, the Town of Normal is a Home Rule Unit of local government with authority to legislate in matters concerning its local government and affairs; and

WHEREAS, Ratio Architects will provide design service for the Programming Study to consider the future relocation of various Town department to the proposed Normal Multimodal Transportation Center; and

WHEREAS, the proposed project shall involve the assessment/space needs of five Town of Normal municipal offices departmental units; and

WHEREAS, it is in the best interest of the health, safety and welfare of the citizens of Normal to enter into an Agreement with Ratio Architects, Inc. for the Programming Study to consider the future relocation of various Town departments to the proposed Normal Multimodal Transportation Center.

NOW, THEREFORE, BE IT RESOLVED BY THE PRESIDENT AND BOARD OF TRUSTEES OF THE TOWN OF NORMAL, ILLINOIS:

SECTION ONE: That the Town of Normal hereby authorizes the President of the Board of Trustees to enter into a Agreement with Ratio Architects, Inc. A copy of said Agreement is attached hereto as Exhibit "A" and incorporated herein by reference; and

SECTION TWO: That the Town Clerk be, and she is hereby authorized and directed to attest to the signature of the President of the Board of Trustee on said agreement and to retain a fully executed original of said agreement in her office for public inspection.

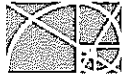
ADOPTED this ____ day of _____, 2007.

APPROVED:

President of the Board of Trustees of the
Town of Normal, Illinois

ATTEST:

Town Clerk
(seal)



RATIO

Architecture Preservation Interior Design Landscape Architecture Urban

September 21, 2007

Mr. Mark Peterson, City Manager
Town of Normal
100 E. Phoenix
Normal, Illinois 61761

Re: Design Services Proposal - Town Offices Programming Study

Dear Mark:

Thank you, again, for the opportunity to provide this design services for the Programming Study to consider the future relocation of various Town departments to the proposed Normal Multimodal Transportation Center. We are always pleased that you continue to consider RATIO with projects in and around Uptown Normal, and look forward to assisting you in the development of a program that meets your immediate needs.

As requested, we are providing the following proposal for your consideration based on our recent discussions at your office last week

PROJECT SCOPE

The proposed project shall involve the assessment/space needs of the five (5) Town of Normal municipal offices departmental units we discussed, with the potential for other groups that might make sense to be physically associated as well. We understand the Departments under initial consideration are Administration, Legal, Finance, Clerk and Human Resources with the intention of relocating the Council Chamber, a Board Room, and associated office space for the Mayor.

We understand the need to program the existing offices that fit into approximately 20,000 sq. ft. of space available on two floors. The intent is to determine the possibility/probability of moving the Town offices to the upper floors of the proposed Multimodal Facility with the Lower Level to remain as the Transportation related level.

SCOPE of SERVICES

- I. RATIO will conduct individual programming meetings with identified Town department leaders to develop a space needs analysis of the existing departments. The meetings will occur within one or two days, with individual groups scheduled in advance. Issues that may be discussed include:
 - Departmental staffing counts and projected growth.
 - Net Area Space needs review
 - Organizational flow of staff
 - Functional issues such as departmental adjacencies, public access, delivery access, parking, security, and special amenities such as a break room, etc.

2. RATIO will then analyze the proposed departmental space requirements as they relate to the available space in the upper floors of the Normal Multimodal Transportation Center. With this effort, the study will assume the proposed three-level-facility will be increased to a total of four levels for additional square footage capacity in the facility.
3. Develop diagrammatic block area plans showing proposed departmental adjacencies and/or stacking.
4. Review Meeting with Town leadership for consensus of block plan options.
5. Publish the Space Needs Program document for Town of Normal use.
6. Assist the Town in developing the possible uses for the areas in the existing Town building once Departments in question have vacated their space. Office spaces that were discussed might include the Parks & Recreation, Public Works Administration and Engineering, and the Water Department Billing entity.

For the purposes of this study, we have not included the efforts of any additional outside consultants, in that we understand Engineering services, and the like, are not required.

CLIENT PROVIDED INFORMATION

RATIO will require the following information and/or supporting documentation from the Town of Normal:

1. Indication of the departments and areas most desired for relocation.
2. Provide Historical/Existing Data such as:
 - Scheduled date and times for each Department for the initial Kick-off Meeting
 - Current Organizational Chart for each Department
 - Existing Floor Plans of existing departments (AutoCAD electronic file if available and prints labeled with current room function or department areas).
 - Are there specific standards for office or room sizes?
 - Are there specific standards for workstation sizes?
 - RATIO will utilize CAD floor plans of the proposed Multimodal Transportation Center for these planning purposes.

SCHEDULE

We are prepared to commence our services upon receiving written authorization to proceed. We anticipate being able to complete the Programming Phase around the November 1, 2007 timeframe, depending on availability of Town staff and information.

COMPENSATION

In consideration of the Project Scope, Design Services, and Schedule described above, RATIO Architects, Inc. will provide the identified Services for a stipulated lump sum fee of Eighteen Thousand Dollars (\$18,000.00).

After the programming effort and final direction for the relocation of spaces is approved, we will provide a separate detailed proposal for the development of those spaces at that time.

REIMBURSABLE EXPENSES

Expenses attributable to your project will be invoiced as a Reimbursable Expense at 1.10 times the item's expense. Expenses may include:

- A. Drawing Reproduction/Photographic Reproduction
- B. Copying
- C. Supplies
- D. Mailing/Express Mail
- E. Long Distance Communications
- F. Mileage, Air Travel, and Lodging
- G. Artist Renderings
- H. Other, approved, miscellaneous expense incurred in the interest of the project

For the purposes of this proposal, we estimate reimbursable expenses will not exceed Two Thousand Dollars (\$2,000.00).

ADDITIONAL SERVICES

Any additional services beyond the identified Scope of Services, which you may request, shall be invoiced at the hourly rate of the personnel assigned to the task. The range of hourly rates listed below is the approximate rate at which billing will occur. The following firm position titles fall within each Technical Level:

| FIRM TITLES Project Role Description | RANGE OF 2007 HOURLY RATES (Subject to Annual Adjustment) |
|--|---|
| 1. Principal 1 | \$205.00 |
| 2. Principal 2 | \$175.00 |
| 3. Associate Principal | \$145.00 |
| 4. Senior Associate | \$135.00 |
| 5. Associate Project Director Specification Writer & Construction Observer | \$125.00 |
| 6. Senior Professional Architect/Landscape Architect/Planner/Interior Designer | \$115.00 |
| 7. Professional Architect/Landscape Architect/Planner/Interior Designer Graphic Designer | \$95.00 |
| 8. Graduate Professional Graduate Architect/Landscape Architect/Planner/Interior Designer Technician CADD Operator/Technician | \$75.00 |
| 9. Intern Intern Architect/Landscape Architect/Planner/Interior Designer Technical Intern | \$55.00 |
| 10. Administrative Clerical Assistant Word Processing & Other Support Services as required | \$55.00 |

Mr. Mark Peterson
Page 4
September 21, 2007

PAYMENT

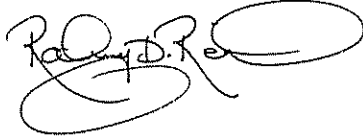
Invoices shall be sent monthly and shall be in proportion to services performed. Payment is due upon receipt. Amount unpaid thirty (30) days after being received shall bear interest at one and one half percent (1 1/2%) per month accrued.

ABANDONMENT

If the project is abandoned, in part or in whole, payment on account of the services performed shall be made upon presentation of a final accounting of services rendered and expenses incurred since the last paid invoice to the date of such action.

Please review this proposal and if all is in order, we would appreciate the return of an executed original for our file. If you have any questions, do not hesitate to contact me directly. Once again, thank you for involving RATIO Architects, Inc. in this most important project.

Sincerely,

A handwritten signature in black ink, appearing to read "Rodney D. Reid". The signature is stylized with large, sweeping loops and is positioned above the printed name.

Rodney D. Reid, AIA
Principal

AUTHORIZATION TO PROCEED:

Town of Normal

Date

TOWN COUNCIL ACTION REPORT

October 11, 2007

Resolution Authorizing the Execution of an Agreement with the Union Pacific Railroad to Relocate Existing Railroad Signal Equipment from Fell Avenue to Linden Street in Conjunction with the Hotel/Conference Center Parking Deck and the Multimodal Transportation Center Projects in an Amount Not to Exceed \$122,000

PREPARED BY: Wayne Aldrich, Uptown Development Director

REVIEWED BY: Mark R. Peterson, City Manager

BUDGET IMPACT: Funds in the amount of \$148,700 are included in fund 332-9835-466.55-60 of the Uptown Fund to cover this expense. Therefore, approval of this agreement will result in a \$26,700 budget savings.

STAFF RECOMMENDATION: Approval

ATTACHMENTS: Proposed Resolution, Cover Letter from Union Pacific, Proposed Agreement with Union Pacific

BACKGROUND

On June 5, 2006 the Town Council authorized the execution of an agreement with the Union Pacific Railroad for the purchase of railroad right-of-way on the north side of the railroad tracks from Fell Avenue to the location of the Children's Discovery Museum. This property acquisition was required to construct both the Hotel/Conference Center parking deck and the Multimodal Transportation Center.

Although the Town now owns the property, the Union Pacific has reserved easements to occupy the property with railroad signal equipment. This signal equipment will need to be relocated prior to construction of the parking deck and Transportation Center projects. The 2006 purchase agreement states that the Union Pacific will relocate the signal facilities provided the Town pays the costs of relocation.

DISCUSSION/ANALYSIS

The Union Pacific has completed plans and estimates for the relocation of the signal facilities. The work will include relocation of the signal cables and one signal cabin (bungalow) from Fell Avenue to Linden Street. The estimate for the work to relocate the signal facilities is \$110,917. In accordance with the proposed agreement, the Town will be responsible for the actual costs incurred by the railroad for the relocation work. The railroad will submit a final billing to the Town within 120 days of the completion of the relocation work. If the costs exceed the estimate by 10%, or \$122,000, the item will be returned to the Council for further consideration. As this work is critical to the completion of the Hotel/Conference Center parking deck and Multimodal Transportation Center projects, the staff recommends approval.

RESOLUTION NO. _____

A RESOLUTION AUTHORIZING EXECUTION OF AN AGREEMENT WITH UNION PACIFIC RAILROAD COMPANY – REMOVAL AND RELOCATION OF SIGNAL CABIN AT BROADWAY STREET CROSSING

WHEREAS, the Town of Normal is a Home Rule Unit of local government with authority to legislate in matters concerning its local government and affairs; and

WHEREAS, the Town of Normal has requested Union Pacific to remove and relocate an existing signal cabin at Broadway Street crossing at Railroad Mile Post 124.20 on Union Pacific's Joliet Subdivision, DOT NO. 290 812D in the Town of Normal, to which Union Pacific is agreeable; and

WHEREAS, it is in the best interest of the health, safety and welfare of the citizens of Normal to enter into an Agreement with Union Pacific Railroad for the removal and relocation of the signal cabin at Broadway Street crossing.

NOW, THEREFORE, BE IT RESOLVED BY THE PRESIDENT AND BOARD OF TRUSTEES OF THE TOWN OF NORMAL, ILLINOIS:

SECTION ONE: That the Town of Normal hereby authorizes the President of the Board of Trustees to enter into an Agreement with Union Pacific Railroad Company for the removal and relocation of the signal cabin at Broadway Street crossing. A copy of said Agreement is marked Exhibit "A", attached hereto and incorporated herein by reference.

SECTION TWO: That the Town Clerk be, and she is hereby authorized and directed to attest to the signature of the President of the Board of Trustee on said agreement and to retain a fully executed original of said Agreement in her office for public inspection.

ADOPTED this ____ day of _____, 2007.

APPROVED:

President of the Board of Trustees of the
Town of Normal, Illinois

ATTEST:

Town Clerk

(seal)



David W. McKernan
Manager Industry & Public Projects

October 5, 2007

File: Crossing: Public
IL. Normal
Broadway Street
MP 124.20 Joliet Subdivision
DOT 290 812D

Mr. Wayne Aldrich
Downtown Development Director
Town of Normal
100 East Phoenix Avenue, P.O. Box 589
Normal, IL 61761-0589

RE: Broadway signal cabin relocation agreement

Dear Mr. Aldrich:

Enclosed please find duplicate originals of the proposed agreement for relocation of the existing signal cabin for the above referenced location.

Upon the City's execution of the agreement, please return the documents to this office for Union Pacific to execute.

If you have any questions or if I may be of further assistance, please contact this office at (314) 331-0682.

Sincerely,

A handwritten signature in cursive script that reads "David W. McKernan".

David W. McKernan
Manager Industry & Public Projects

cc: operating file

**IMPROVEMENTS TO EXISTING PUBLIC ROAD AT GRADE CROSSING
FOR BROADWAY STREET, DOT 290 812D
M.P. 124.20 JOLIET SUBDIVISION
NORMAL IL.**

THIS AGREEMENT, executed in duplicate this 5th day of October, 2007 by and between UNION PACIFIC RAILROAD COMPANY, a Delaware corporation ("Railroad"), and CITY OF NORMAL, a municipal corporation of the State of Illinois ("Political Body").

RECITALS:

Political Body has requested Railroad to improve the existing Broadway Street crossing, at grade, along, over and across Railroad's track and right of way at Railroad Mile Post 124.20, on Railroad's Joliet Subdivision, DOT No. 290 812D in City of Normal, McLean County, State of Illinois (the "Crossing"), to which Railroad is agreeable, but solely upon terms and conditions hereinafter set forth.

The location of the Crossing is generally shown on the print marked **Exhibit A**, attached hereto and hereby made a part hereof.

AGREEMENT:

NOW THEREFORE, in consideration of the premises and of the promises and conditions hereinafter set forth, the parties hereto agree as follows:

1. Railroad shall furnish all labor, material, equipment and supervision for, and shall (a) remove the existing signal cabin, (b) relocate and re-install a new signal cabin and conduit for the new signal cables and all other signal work associated with relocation.

2. Political Body agrees to reimburse the Railroad for one hundred percent (100%) of Railroad's actual labor and material costs associated with the work and materials described in Section 1 above. Railroad estimates such cost to be One hundred and ten thousand, nine hundred and seventeen dollars (\$110,917.00), as set forth in Estimate of Material and Force Account dated August 15, 2007 marked **Exhibit B**, hereto attached and hereby made a part hereof. During the performance of such work Railroad will provide progressive billing to Political Body based on Railroad's actual costs. Actual costs to Railroad shall include customary additives (which includes its overhead and indirect construction costs) to materials, services and labor provided by Railroad. Within One Hundred Twenty (120) days after Railroad has completed its work, Railroad will submit a final billing to Political Body for any balance owed. Political Body shall pay Railroad within thirty (30) days of its receipt of progressive and final bills submitted by Railroad.

3. Railroad, at its cost, upon relocation shall maintain the warning device system. If, in the future, Political Body elects to have the warning system relocated or replaced, the Railroad, at the Political Body's expense, shall furnish labor, material, equipment and supervision for all work associated.

4. Political Body, at its cost, shall provide all labor, material and equipment associated with traffic control, barricades, detour signing, advanced warning signs and pavement markings. All such work shall be in compliance with the current Manual on Uniform Traffic Control Devices.

5. If Political Body's contractor(s) is/are performing any work described in Section 4 above, then Political Body shall require its contractor(s) to execute Railroad's standard and current form of Contractor's Right of Entry Agreement. Political Body acknowledges receipt of a copy of the

Contractor's Right of Entry Agreement and understanding of its terms, provisions, and requirements, and will inform its contractor(s) of the need to execute the Agreement and to obtain and provide to Railroad the insurance policies, binders, certificates and endorsements that are required in the Contractor's Right of Entry Agreement. Under no circumstances will the Political Body's contractor(s) be allowed onto the Railroad's premises without first executing the Contractor's Right of Entry Agreement and providing the aforesaid insurance documents.

6. Fiber optic cable systems may be buried on Railroad's property. Protection of the fiber optic cable systems is of extreme importance since any break could disrupt service to users resulting in business interruption and loss of revenue and profits. Political Body or its contractor(s) shall telephone Railroad during normal business hours (7:00 a.m. to 9:00 p.m., Central Time, Monday through Friday, except holidays) at 1-800-336-9193 (also a 24-hour number, 7 day number for emergency calls) to determine if fiber optic cable is buried anywhere on Railroad's premises to be used by Political Body or its contractor(s). If it is, Political Body or its contractor(s) will telephone the telecommunications company(ies) involved, arrange for a cable locator, and make arrangements for relocation or other protection of the fiber optic cable prior to beginning any work on Railroad's premises.

7. Political Body, for itself and for its successors and assigns, hereby waives any right of assessment against Railroad, as an adjacent property owner, for any and all improvements made under this Agreement.

8. Covenants herein shall inure to or bind each party's successors and assigns; provided, no right of Political Body shall be transferred or assigned, either voluntarily or involuntarily, except by express written agreement acceptable to Railroad.

9. Political Body hereby confirms that funds have been appropriated for the work set forth in this Agreement.

10. The person signing this Agreement on behalf of Political Body hereby confirms that he/she is authorized under Political Body policies and procedures to execute this Agreement and to bind Political Body to the obligations under this Agreement.

IN WITNESS WHEREOF, the parties hereto have duly executed this Agreement as of the date first herein written.

UNION PACIFIC RAILROAD COMPANY

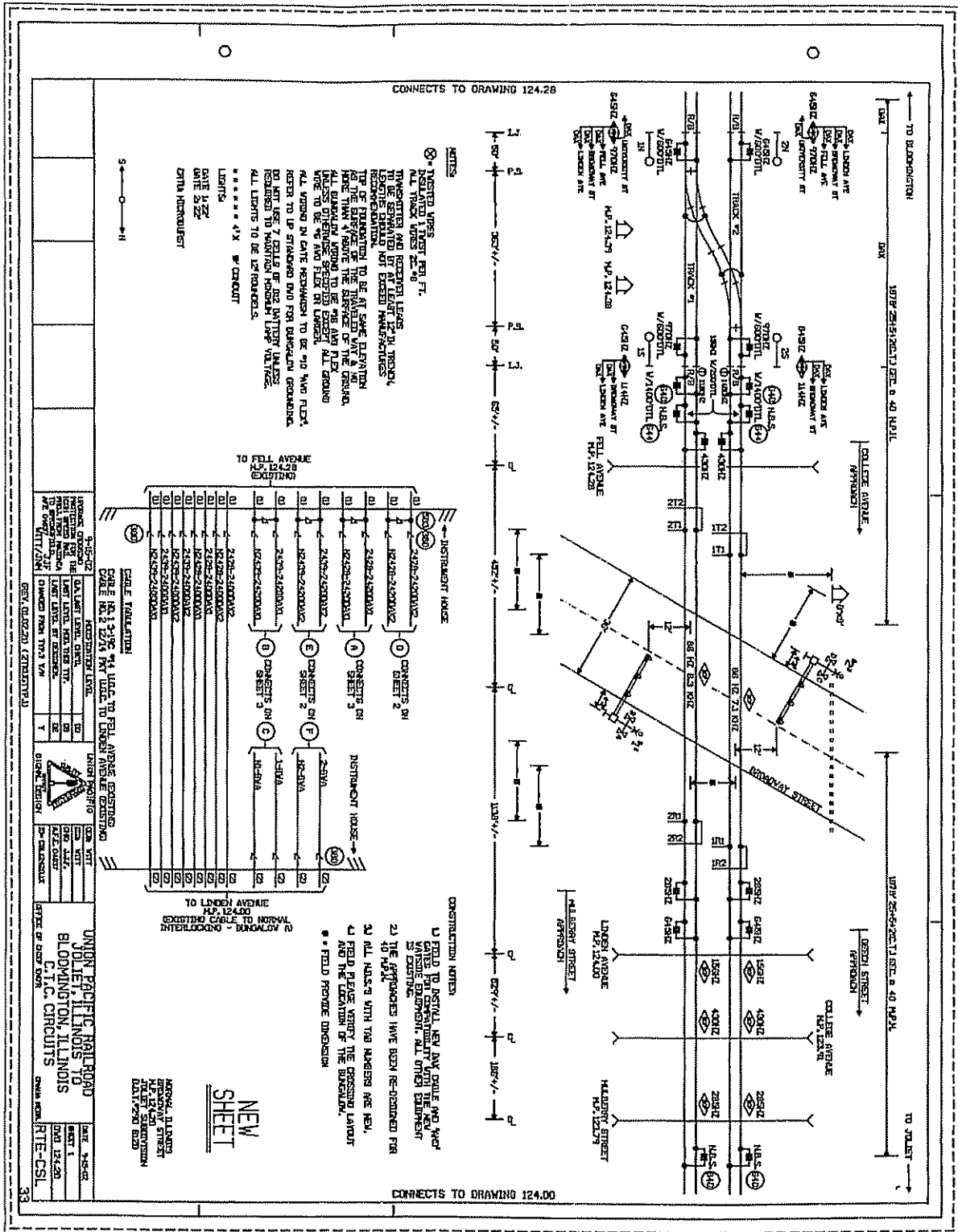
By _____

Title: _____

CITY OF NORMAL

By _____

Title: _____



CONNECTS TO DRAWING 124.2B

CONNECTS TO DRAWING 124.00

NOTES

- 1) FIELD TO INSTALL NEW AWG GAUGE AND WIRE SIZES FOR COMPATIBILITY WITH THE NEW CABLES FOR CONDUIT. ALL OTHER EQUIPMENT IS TO REMAIN.
- 2) THE APPROXIMATES HAVE BEEN RE-DRAWN FOR ALL WIRE SIZES WITH TAG NUMBERS ARE NEW.
- 3) ALL WIRE SIZES WITH TAG NUMBERS ARE NEW.
- 4) FIELD PLEASE VERIFY THE CROSSING LOCATION AND THE LOCATION OF THE BUSHINGS.
- 5) FIELD PROVIDE DIMENSIONS.

CONSTRUCTION NOTES

- 1) FIELD TO INSTALL NEW AWG GAUGE AND WIRE SIZES FOR COMPATIBILITY WITH THE NEW CABLES FOR CONDUIT. ALL OTHER EQUIPMENT IS TO REMAIN.
- 2) THE APPROXIMATES HAVE BEEN RE-DRAWN FOR ALL WIRE SIZES WITH TAG NUMBERS ARE NEW.
- 3) ALL WIRE SIZES WITH TAG NUMBERS ARE NEW.
- 4) FIELD PLEASE VERIFY THE CROSSING LOCATION AND THE LOCATION OF THE BUSHINGS.
- 5) FIELD PROVIDE DIMENSIONS.

SCALE TABLE

| CONDUCTOR | CONDUIT | WIRE | WIRE | WIRE |
|-----------|-----------|--------|--------|--------|
| 250MCM | 4" DIA | 250MCM | 250MCM | 250MCM |
| 150MCM | 3" DIA | 150MCM | 150MCM | 150MCM |
| 75MCM | 2" DIA | 75MCM | 75MCM | 75MCM |
| 35MCM | 1.5" DIA | 35MCM | 35MCM | 35MCM |
| 25MCM | 1.25" DIA | 25MCM | 25MCM | 25MCM |
| 15MCM | 1" DIA | 15MCM | 15MCM | 15MCM |
| 10MCM | 0.75" DIA | 10MCM | 10MCM | 10MCM |
| 5MCM | 0.5" DIA | 5MCM | 5MCM | 5MCM |

NEW SHEET

UNION PACIFIC RAILROAD
 JOULET, ILLINOIS TO
 BLOOMINGTON, ILLINOIS
 C.T.C. CIRCUITS
 DATE 1-25-60
 DRAWN BY
 CHECKED BY
 APPROVED BY

DATE: 2007-08-15

ESTIMATE OF MATERIAL AND FORCE ACCOUNT WORK
 BY THE
 UNION PACIFIC RAILROAD

THIS ESTIMATE GOOD FOR 6 MONTHS EXPIRATION DATE IS :2008-02-15

DESCRIPTION OF WORK:
 INSTALL NEW SIGNAL CABIN, CABLE & INSTALL CONDUIT FOR FUTURE SIGNAL
 CABLE AT BROADWAY IN NORMAL, IL. M.P. 124.20 ON THE JOLIET SUB.
 SIGNAL PROJECT MANAGER: RON NASH 595-3275
 RAILROAD TO PERFORM ALL WORK / COST DISTRIBUTED AS FOLLOWS:
 SIGNAL - CITY OF BLOOMINGTON 100%

PID: 58953 AWO: 84101 MP,SUBDIV: 124.20, JOLIET
 SERVICE UNIT: 04 CITY: NORMAL STATE: IL

| DESCRIPTION | QTY | UNIT | LABOR | MATERIAL | RECOLL | UPRR | TOTAL |
|------------------------------------|-----|------|-------|----------|--------|------|--------|
| ENGINEERING WORK | | | | | | | |
| ENGINEERING | | | 511 | | 511 | | 511 |
| LABOR ADDITIVE 174% | | | 1806 | | 1806 | | 1806 |
| SIG-HWY XNG | | | 527 | | 527 | | 527 |
| TOTAL ENGINEERING | | | 2844 | | 2844 | | 2844 |
| SIGNAL WORK | | | | | | | |
| BILL PREP | | | 900 | | 900 | | 900 |
| BORING PIPE | | | | 30000 | 30000 | | 30000 |
| CONTRACT | | | | 1434 | 1434 | | 1434 |
| EARTH FILL/ROCK | | | | 2000 | 2000 | | 2000 |
| LABOR ADDITIVE 174% | | | 22368 | | 22368 | | 22368 |
| PERSONAL EXPENSES | | | | 9847 | 9847 | | 9847 |
| SALES TAX | | | | 896 | 896 | | 896 |
| CONTINGENCIES | | | | 10083 | 10083 | | 10083 |
| SIGNAL | | | 12855 | 14349 | 27204 | | 27204 |
| TRANSPORTATION CHARGES | | | | 1125 | 1125 | | 1125 |
| WZ TRAFFIC CONTROL | | | | 2216 | 2216 | | 2216 |
| TOTAL SIGNAL | | | 36123 | 71950 | 108073 | | 108073 |
| LABOR/MATERIAL EXPENSE | | | 38967 | 71950 | | | |
| RECOLLECTIBLE/UPRR EXPENSE | | | | | 110917 | 0 | |
| ESTIMATED PROJECT COST | | | | | | | 110917 |
| EXISTING REUSEABLE MATERIAL CREDIT | | | | | 0 | | |
| SALVAGE NONUSEABLE MATERIAL CREDIT | | | | | 0 | | |
| RECOLLECTIBLE LESS CREDITS | | | | | | | |

THE ABOVE FIGURES ARE ESTIMATES ONLY AND SUBJECT TO FLUCTUATION. IN THE EVENT OF AN INCREASE OR DECREASE IN THE COST OR QUANTITY OF MATERIAL OR LABOR REQUIRED, UPRR WILL BILL FOR ACTUAL CONSTRUCTION COSTS AT THE CURRENT EFFECTIVE RATE.

TOWN COUNCIL ACTION REPORT

October 11, 2007

Resolution to Appropriate \$945,400.00 of Motor Fuel Tax Funds for the Construction of Ziebarth Road from Pipeline Road West to approximately 1600' west of Glendale Lane

PREPARED BY: Gene Brown, City Engineer

REVIEWED BY: Mark R. Peterson, City Manager
Mike Hall, Director of Public Works

BUDGET IMPACT: Funds are budgeted in line item 213-7045-431.51-78 of the Motor Fuel Tax Budget

STAFF RECOMMENDATION: Approval

ATTACHMENTS: Proposed Resolution

BACKGROUND

The FY 2007 - 2008 Motor Fuel Tax Budget includes \$1,016,000.00 for the design engineering, ROW acquisition and construction phases of Ziebarth Road from Pipeline Road to approximately 1600' west of Glendale Lane (the west boundary of North Bridge Subdivision), a distance of approximately 2700 feet. The revised estimate included in the proposed FY 2008-2009 budget is \$945,400.00. The project consists of the design and construction of a twenty-six foot wide rural section concrete pavement with turn lanes as required with gravel shoulders. The project will be designed to accommodate the addition of two outside lanes with curb and gutter in the future as development north of Pipeline Road dictates. This project is scheduled to be completed in late summer of 2008.

This resolution will appropriate \$945,400.00 of the Town's allotment of Motor Fuel Tax Funds for the construction of Ziebarth Road from Pipeline Road to approximately 1600' west of Glendale Lane.



Resolution for Improvement by Municipality Under the Illinois Highway Code

BE IT RESOLVED, by the President and Board of Trustees of the _____ Council or President and Board of Trustees
 Town _____ of Normal Illinois
 City, Town or Village _____

that the following described street(s) be improved under the Illinois Highway Code:

| Name of Thoroughfare | Route | From | To |
|----------------------|-------|-----------------------|-------------------------------------|
| Ziebarth Road | | Pipeline Road (CH 31) | 1600' west of Glendale Lane (appr.) |
| | | | |
| | | | |
| | | | |
| | | | |

BE IT FURTHER RESOLVED,
 1. That the proposed improvement shall consist of construction of Ziebarth Road initially to a two-lane P.C. Concrete rural section pavement with turn lanes as required at Glendale Lane and/or Benson Lane, which will be expanded to four lanes with curb and gutter when traffic warrants. Project includes storm sewers and necessary incidentals.

_____ and shall be constructed 26' E-E wide
 and be designated as Section 07-00232-00-RP

2. That there is hereby appropriated the (additional Yes No) sum of _____
nine hundred forty - five thousand four hundred Dollars (\$945,400.00) for the
 improvement of said section from the municipality's allotment of Motor Fuel Tax funds.

3. That work shall be done by contract _____ ; and,

Specify Contract or Day Labor

BE IT FURTHER RESOLVED, that the Clerk is hereby directed to transmit two certified copies of this resolution to the district office of the Department of Transportation.

Authorized MFT Expenditure _____

Date _____

Department of Transportation

Regional Engineer _____

I, Wendellyn J. Briggs Clerk in and for the
 Town _____ of Normal
 City, Town or Village _____
 County of McLean _____, hereby certify the
 foregoing to be a true, perfect and complete copy of a resolution adopted
 by the President and Board of Trustees
 Council or President and Board of Trustees
 at a meeting on October 15, 2007
 Date _____
 IN TESTIMONY WHEREOF, I have hereunto set my hand and seal this
 _____ day of _____
 (SEAL)

 City, Town, or Village Clerk

TOWN COUNCIL ACTION REPORT

October 11, 2007

Resolution Conditionally and Partially Approving an Amended Final Development Plan for the Shoppes at College Hills Planned Unit Development (Red Lobster Restaurant)

PREPARED BY: Mercy Davison, Town Planner

REVIEWED BY: Mark R. Peterson, City Manager
Greg Troemel, Director of Inspections
Steven D. Mahrt, Corporation Counsel

BUDGET IMPACT: N/A

STAFF RECOMMENDATION: Approval

PLANNING COMMISSION: Approved (7-0)

ATTACHMENTS: Proposed Resolution; Staff Report to the Planning Commission; Minutes of the October 4, 2007 Planning Commission meeting are included in the Addendum.

BACKGROUND

In May 2004 Cullinan Properties, Ltd. presented a Preliminary Planned Unit Development for the new Shoppes at College Hills, a "lifestyle shopping center" that has now replaced much of the previously existing College Hills Mall. The Council approved the Preliminary PUD in May 2004 (Res. No. 3521) and ultimately approved the Final PUD in September 2004 (Res. No. 3577).

In February 2005 Cullinan amended the Final PUD. The key elements in the amended Final PUD included the following:

- **A new Hampton Inn** at the southwest corner of the Shoppes property
- **An amended sign package.**

In May 2006 the PUD was amended to permit the following:

- **Brew Pub and Restaurant** (now called "Distihl") north of the Hampton Inn
- **Lot Layout Plan** showing all proposed pad lots.

In June 2006 the PUD was amended to add a **Logan's Roadhouse** restaurant at the northwest corner of Veterans Parkway and Sugar Creek.

TOWN COUNCIL ACTION REPORT

At this time Darden Restaurants is proposing to amend the PUD to include a Red Lobster restaurant at the southwest corner of Veterans Parkway and Von Maur Drive, directly north of Logan's Roadhouse.

As with all of the pad lots at the Shoppes at College Hills, the Community Design Standards apply to the Red Lobster lot in regard to building design, landscaping, and outdoor lighting. The site meets these standards. The building design is very attractive, with varied rooflines, multi-sided treatment, high quality materials such as concrete board, slate, and stone, and tasteful building signage. The freestanding, 22-foot pole sign on Veterans meets the previously approved sign plan for the Shoppes at College Hills. The parking lot lighting will match that used throughout the Shoppes.

The originally submitted landscaping plan was also code compliant; however, staff recommended some changes to the site and landscaping plan that Darden agreed to implement. The changes are as follows:

1. The parking spaces facing greenspace will be shortened to the code-permitted 18 feet (rather than 20), and the interior aisles will be narrowed to 24 feet (rather than 25). This will significantly reduce the amount of pavement, which will decrease stormwater runoff and increase greenspace.
2. The landscaping bed along Veterans will be redesigned to be curved and more visually interesting than the currently shown straight line of shrubs and trees.

Darden Restaurant submitted a plan at the Planning Commission meeting (file stamped October 4, 2007) showing both of these changes.

DISCUSSION/ANALYSIS

The zoning code permits the creation of Planned Unit Developments in order to encourage and allow more creative and imaginative design for land development than could be accomplished under more conventional zoning regulations. Additionally, PUDs should promote the efficient use of land, preserve natural features, provide enhanced urban amenities, and create high-quality green space. The trade-off for this flexibility is a higher quality development.

At its meeting on Thursday, October 4, 2007, the Planning Commission held a public hearing pertaining to the Red Lobster amendment proposed for the Shoppes at College Hills PUD. A representative from Darden Restaurants testified. Following its finding of fact, the Commission unanimously (7-0) voted in favor of the proposed amendment to the Shoppes at College Hills PUD for the addition of the Red Lobster with the changes reflected on the plan file stamped October 4, 2007.

Town staff thinks the addition of a Red Lobster to the ongoing redevelopment of the former College Hills Mall meets the PUD goals set forth in the zoning code. The proposed Red Lobster development includes an attractive, high-quality design that will complement the rest of the Shoppes buildings. Furthermore, the Red Lobster addition will fulfill the Town's goal of having a higher end restaurant on the Veterans Parkway side of the Shoppes at College Hills.

For these reasons Town staff recommends that the Town Council approve the proposed amendment to the Final Development Plan for the Shoppes at College Hills file stamped October 4, 2007.

RESOLUTION NO. _____

A RESOLUTION CONDITIONALLY AND PARTIALLY APPROVING AN
AMENDED FINAL DEVELOPMENT PLAN FOR SHOPPES AT COLLEGES HILLS
PLANNED UNIT DEVELOPMENT/RED LOBSTER

WHEREAS, the Town of Normal has enacted a comprehensive Zoning Code incorporated as Division 15 of the Municipal Code Town of Normal, Illinois 1969, as amended; and

WHEREAS, pursuant to said Zoning Code developers of real estate may petition to develop said property through the use of a planned unit development; and

WHEREAS, by choosing to develop property as a planned unit development, the developer elects to submit a contemplated development proposal to a legislative and discretionary review by the Planning Commission and Town Council; and

WHEREAS, after notice and hearing as required by law the Planning Commission did on October 4, 2007, review and recommend approval of an amended final development plan for Shoppes at College Hills Planned Unit Development and more particularly the Red Lobster project; and

WHEREAS, it is in the best interests of the health, safety and welfare of the citizens of Normal to approve an amended final development plan for Shoppes at College Hills Planned Unit Development/Red Lobster project.

NOW, THEREFORE, BE IT RESOLVED BY THE PRESIDENT AND BOARD OF TRUSTEES OF THE TOWN OF NORMAL, ILLINOIS:

SECTION ONE: That this Resolution pertains to the amended final development plan for Shoppes at College Hills Planned Unit Development/Red Lobster project prepared by Shive-Hattery, Professional Design Firm No. 184-000214 dated September 10, 2007, bearing Town of Normal file-stamp dated October 4, 2007, consisting of 8 pages with attachments depicting building elevations, sign, lighting and landscaping plans.

SECTION TWO: That the property which is subject to the terms of this Resolution is described as follows:

Lot 5 of the Shoppes at College Hills Subdivision to the Town of Normal, McLean County, Illinois.

SECTION THREE: That the amended final development plan identified herein be and the same is hereby conditionally approved with the following waivers: None.

SECTION FOUR: That the approval is conditioned on the following: None.

SECTION FIVE: That development, maintenance and occupancy of said planned unit development shall comply with all Town codes, ordinances and approving Resolutions.

Adopted this _____ day of October, 2007.

APPROVED:

President of the Board of Trustees of the
Town of Normal, Illinois

ATTEST:

Town Clerk

(seal)



Amended Final Development Plan

Case #: 07-10-17-PC

Applicant: Darden Restaurants, Inc.

Location: Shoppes at College Hills

Date: October 4, 2007

Background

In May 2004 the Town approved a preliminary PUD for the Shoppes at College Hills, a redevelopment of the former College Hills Mall. The preliminary plan pertained to the redevelopment of the entire mall site with the exception of the three anchor stores (Von Maur, Target, and Hobby Lobby) and their parking lots. The preliminary plan proposed new retail areas near Von Maur and Target along with several pad lots located throughout the Shoppes. The final PUD for the Shoppes at College Hills was approved in September 2004.

In February 2005 Cullinan amended the Final PUD. The key elements in the amended Final PUD included the following:

- **A new Hampton Inn** at the southwest corner of the Shoppes property
- **An amended sign package.**

In April 2006 a minor change to the PUD was administratively approved at the staff level. Elements of the minor change included the addition of new decorative lighting and landscaping to the Hobby Lobby lot.

In May 2006 the PUD was amended to permit the following:

- **Brew Pub and Restaurant** (now called "Distihl") north of the Hampton Inn
- **Lot Layout Plan** showing all proposed pad lots.

In June 2006 the PUD was amended to add a **Logan's Roadhouse** restaurant at the northwest corner of Veterans Parkway and Sugar Creek.

Current Proposal

At this time Darden Restaurants is proposing to amend the PUD to include a Red Lobster restaurant at the southwest corner of Veterans Parkway and Von Maur Drive, directly north of Logan's Roadhouse.

As with all of the pad lots at the Shoppes at College Hills, the Community Design Standards apply to the Red Lobster lot in regard to building design, landscaping, and outdoor lighting. The site

meets these standards. The building design is very attractive, with varied rooflines, multi-sided treatment, high quality materials such as concrete board, slate, and stone, and tasteful building signage. The freestanding, 22-foot pole sign on Veterans meets the previously approved sign plan for the Shoppes at College Hills. The parking lot lighting will match that used throughout the Shoppes.

The landscaping plan is also code compliant; however, staff has recommended some changes to the site and landscaping plan that Darden has agreed to implement. They will bring the revised plans to the public hearing. In sum, the changes are as follows:

1. The parking spaces facing greenspace will be shortened to the code-permitted 18 feet (rather than 20), and the interior aisles will be narrowed to 24 feet (rather than 25). This will significantly reduce the amount of pavement, which will decrease stormwater runoff and increase greenspace.
2. The landscaping bed along Veterans will be redesigned to be curved and more visually interesting than the currently shown straight line of shrubs and trees.

Representatives from Cullinan Properties and Darden Restaurant will be available to answer questions about the proposed Amended Final PUD during the public hearing.

Zoning & General Land Use

The proposed Red Lobster site is north of the Logan's Roadhouse on Veterans Parkway. All of the properties surrounding the site are zoned for commercial uses.

Project Analysis

Planned Unit Developments are permitted by Sec. 15, Div. 9 in order to encourage and allow more creative and imaginative design for land development than could be accomplished under more conventional zoning regulations. PUDs are meant to more efficiently use land, to include well-designed open spaces, and to incorporate high-quality urban designs.

The addition of a Red Lobster to the ongoing redevelopment of the former College Hills Mall meets these PUD goals. The proposed Red Lobster development includes an attractive, high-quality design that will complement the rest of the Shoppes buildings. Furthermore, one of the Town's goals has been to attract a higher end restaurant to the Veterans Parkway side of the Shoppes at College Hills. Red Lobster will fulfill this goal.

Staff Recommendation

For these reasons, Town staff recommends approval of the proposed Red Lobster with the changes noted in regard to paved areas and landscaping design.

TOWN COUNCIL ACTION REPORT

October 11, 2007

Motion to Adjourn to Executive Session

PREPARED BY: Mark R. Peterson, City Manager

BUDGET IMPACT: N/A

STAFF RECOMMENDATION: Council Adjourn to Executive Session

ATTACHMENTS: None

BACKGROUND

Staff is requesting an opportunity to meet with the Mayor and Council in Executive Session immediately following your regular meeting of October 15, 2007. The purpose of the Executive Session will be to approve minutes of the Executive Session held on August 20, 2007. In addition, staff would like to discuss with Council matters pertaining to Collective Bargaining and Land Acquisition.

**TOWN OF NORMAL PLANNING COMMISSION MINUTES
THURSDAY, OCTOBER 4, 2007, 5:00 P.M.
REGULAR MEETING, CITY HALL COUNCIL CHAMBERS
100 E. PHOENIX AVE., NORMAL, IL**

Members Physically Present:

Ms. Moonan, Mr. Bartley, Mr. Boser, Mr. Feid, Ms. Struck, Mr. McBride, and Ms. Hutchison

Members Absent:

None

Others Present:

Mr. Mahrt, Corporation Counsel, Mr. Troemel, Director of Inspections, Ms. Davison, Town Planner, Mr. Brown, Town Engineer, and Ms. McHenry, Office Associate

Call to Order:

Chairperson Moonan called the meeting to order at 5:00 p.m. and noted a quorum was present.

Approval of Minutes:

Minutes of the September 6, 2007, meeting were approved as submitted. Mr. Feid moved to approve, seconded by Ms. Struck. Motion carried 7-0.

Public Hearing:

a. 07-10-17-PC: Amendment to the Shoppes at College Hills PUD (addition of a Red Lobster), southwest corner of Veterans Parkway and Von Maur Drive

Ms. Davison noted that the applicant for the Kelly Glen PUD amendment requested that the application be carried over until the November meeting.

Ms. Davison reviewed the staff report for the amendment to the Shoppes at College Hills PUD. She said that the site for Red Lobster would have the same lighting as the rest of the development. The sign plan meets code. The landscaping plan has been revised and there are a lot of trees included in the plan. Staff recommends approval of the application.

Ms. Struck said that in regard to the free-standing sign, she believed that they had requested Logan's to lower their sign. Ms. Davison said that the sign was the same height. We asked them to change the color and the base, which they did.

Mr. Boser asked about the shortened parking spaces. Ms. Davison said that they gained a couple of feet of greenspace on the east and west sides by shortening the parking spaces.

Mr. McBride asked if there was any concern regarding traffic with only one in and out. Ms. Davison said that it was reviewed by the Town Engineer and it was private. They can also circulate through Logan's.

Mr. Bob Fields, 609 Chickapee Trail, Maitland, FL, was sworn in by Chairperson Moonan. Mr. Fields said that they were looking forward to being in Normal. They are planning to start right away.

Ms. Hutchison asked when completion would be. Mr. Fields said that it would be about six months.

Ms. Struck asked asked if they were agreeable to Staff's stipulations. Mr. Fields said that they were.

There was no one else to speak regarding the application.

Mr. Bartley moved, seconded by Mr. Boser, to recommend approval of the application to Council.

Ayes: Mr. Bartley, Mr. Boser, Mr. Feid, Ms. Struck, Mr. McBride, Ms. Hutchison and Ms. Moonan.

Nays: None

Motion declared carried.

- b. 07-10-18-PC: Amendment to the Kelly Glen PUD (addition of a swimming pool and clubhouse), southeast corner of Raab Road and Henry Street (to be carried over at the applicant's request)**

Other Business:

Ms. Davison presented an update on the Main Street Corridor plan.

Adjournment:

There being no further business, Mr. Boser moved, seconded by Mr. McBride, to adjourn the meeting at 5:50 p.m. Motion carried 7-0.

Respectfully submitted,

Sheila McHenry
Office Associate